










6/30/2020

REVIEWED  
By Brittany Wylie at 9:56 am, Jul 01, 2020

**Worklist: 4337**

<u>LAB_CASE</u>	<u>ITEM</u>	<u>ITEM_TYPE</u>	<u>DESCRIPTION</u>	
C2020-1098	1	BCK	AM 28 Blood Multi-Drug Quant Panel 1 by LC-QQQ	
C2020-1104	1	BCK	AM 28 Blood Multi-Drug Quant Panel 1 by LC-QQQ	
C2020-1122	1	BCK	AM 28 Blood Multi-Drug Quant Panel 1 by LC-QQQ	
C2020-1132	1	BCK	AM 28 Blood Multi-Drug Quant Panel 1 by LC-QQQ	
C2020-1134	4	BCK	AM 28 Blood Multi-Drug Quant Panel 1 by LC-QQQ	
C2020-1172	1	BCK	AM 28 Blood Multi-Drug Quant Panel 1 by LC-QQQ	
C2020-1181	1	BCK	AM 28 Blood Multi-Drug Quant Panel 1 by LC-QQQ	

# AM# 28: Multi-Drug Quantitation by LC-MS/MS

Extraction Date 6/25/20

Analyst: Anne Nord

Plate lot#: 200513 (part IDP-111-2)

Plate Expiration: 11/13/20

**Mobile phase A:** 5mM Amm Form + 0.01% FA  
0.5M Ammonium Hydroxide

**Mobile phase B:** 0.01% Formic Acid in MeOH  
Ethyl Acetate 20% Methanol in Water

**Blank Blood Lot:** 20A52255 **Urine Blank lot:** no urine samples in this run.

**Column:** Agilent 120 EC-C18 (2.1x 100-2.7um)

**LCMS-QQQ ID:** 69679

## Pre-Analytic:

- 1. Check levels of mobile phases and needle wash refill as needed. Ensure waste is not full.
- 2. Ensure correct column is installed and begin mobile phase flow allow to equilibrate ~ 30 minutes.
- 3. Create worklist:

## Analytic:

- 1. Remove standards, plate, controls, and samples from cold storage. Allow to reach room temperature.
- 2. Urine hydrolysis pipette 250 ul urine in blank well, add 40 ul BG Turbo, add 100 ul 500 mm sodium phosphate buffer, mix for at least 5 minutes at ambient temperature. Pipette 250µL blood (calibrated pipette) Pipette ID: 1926134 or 250µL hydrolyzed urine in wells of analytical (standards) plate.
- 3. Place on shaking incubator at ambient temp., 900rpm for 15 minutes.
- 4. Pipette 250µL 0.5M ammonium hydroxide in wells of analytical plate.
- 5. Place on shaking incubator at ambient temp., 900rpm for 15 minutes.
- 6. Transfer 300µL of blood+base/urine+base mixture to corresponding wells of SLE+ plate.
- 7. Apply positive pressure for approx. 10-15 seconds (or until no liquid remains on top of sorbent).  
*(Load at 85-100 PSI- Selector to the right) Manifold ID: 66792*
- 8. Wait 5 minutes.
- 9. Add 900uL ethyl acetate.
- 10. Wait 5 minutes.
- 11. Apply positive pressure for approx. 15 seconds. *(10-15 PSI- Selector to the left).*
- 12. Add 900uL ethyl acetate.
- 13. Wait 5 minutes.
- 14. Apply positive pressure for approx. 15 seconds. *(10-15 PSI- Selector to the left).*
- 15. Remove plate containing eluate. Urine samples add 50 ul 1% HCl in MeOH, Place on SPE Dry and evaporate to dryness at approx. 35°C.  
*SPE Dry ID: 66819*
- 16. Reconstitute in 100µL 20% MeOH and heat seal plate with foil.

## Post-Analytic

- 1. Create batch and process data.
- 2. Make necessary changes to integration limits
- 3. Integration linear and R<sup>2</sup> values ≥0.98 for each analyte.
- 4. For unknown samples and controls: response ratio within 20% of average of controls and standards, RT within +/- 5% (tramadol RT +/-2%), S/N for primary transition >10 and secondary transitions >5.
- 5. Did all QCs pass for each analyte? Yes, see comments Add Control data to QC tracking spreadsheet.
- 6. Central File Packet to include: LIMS Worklist, Method Checklist, Calibration and Control Reports.

## COMMENTS:

Limited curve ranges –lorazepam 5-500, lamotrigine 5-250, metoprolol 5-500, mitragynine 5-500, mirtazapine 5-500, Norhydrocodone 5-250. Zolpidem qualitative only, edge of internal standard peak cut off. Norbuprenorphine evaluated from 2.5-100.

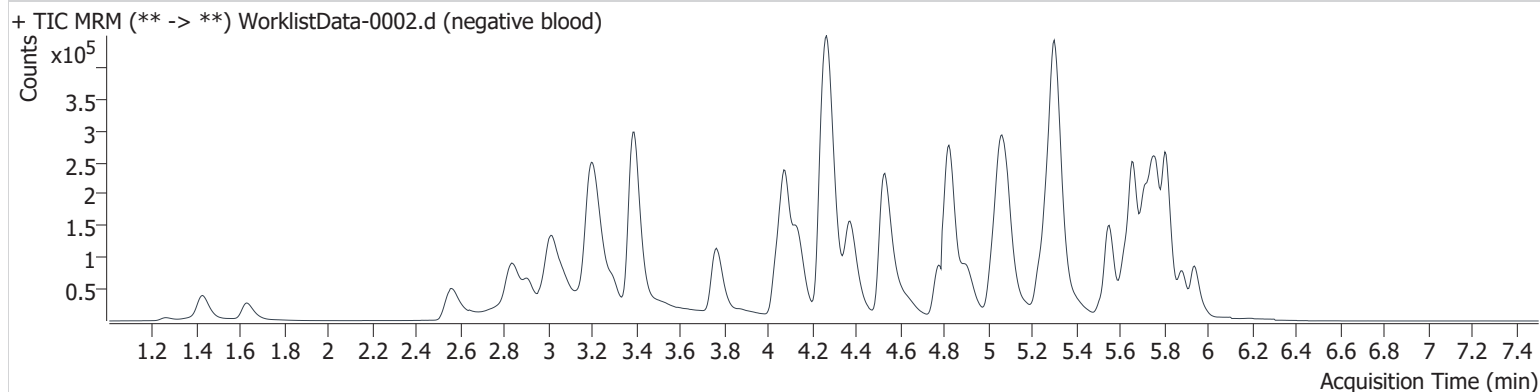
A

# AM #28 Multi-Drug Quant. Results

**Batch results** D:\MassHunter\Data\2020 Data\am 27-28 6-25-20\QuantResults\mdq.batch.bin  
**Calibration Last Update** 6/29/2020 3:23:50 PM

<b>Instrument</b>	69679	<b>Data File</b>	WorklistData-0002.d
<b>Type</b>	Sample	<b>Sample</b>	negative blood
<b>Acq. Method</b>	MDQP1 5-27-20.m	<b>Operator</b>	Anne Nord
<b>Sample Position</b>	P2-F6	<b>Comment</b>	
<b>Injection Volume</b>	2		
<b>Acq. Date-Time</b>	6/25/2020 7:47:19 PM		
<b>Sample Info.</b>			

## Sample Chromatogram



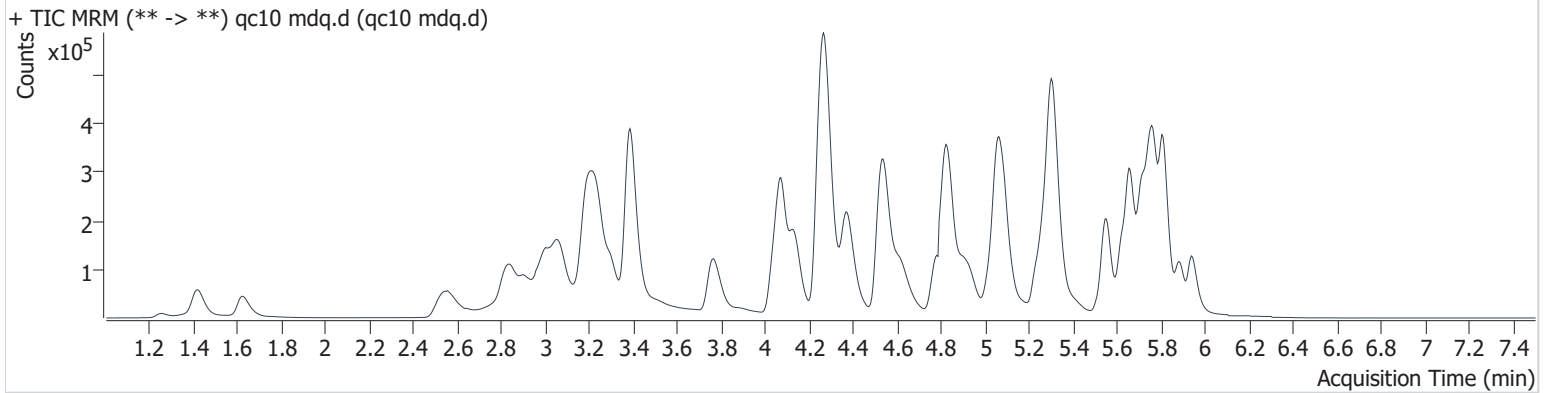


# AM #28 Multi-Drug Quant. Results

**Batch results** D:\MassHunter\Data\2020 Data\am 27-28 6-25-20\QuantResults\mdq.batch.bin  
**Calibration Last Update** 6/29/2020 3:23:50 PM

**Instrument** 69679 **Data File** qc10 mdq.d  
**Type** QC **Sample** qc10 mdq.d  
**Acq. Method** MDQP1 5-27-20.m **Operator** Anne Nord  
**Sample Position** P2-A6 **Comment**  
**Injection Volume** 2  
**Acq. Date-Time** 6/25/2020 7:58:09 PM  
**Sample Info.**

## Sample Chromatogram



Name	RT	Resp.	S/N	Ratio	S/N	ISTD Resp.	Final Conc.
6-MAM	3.151	2027	683.0	83.8	3425.3	50180	0.934 ng/ml
7-aminoclonazepam	4.272	45982	1394.3	100.9	5741.4	196698	9.615 ng/ml
a-hydroxyalprazolam	5.697	11541	313.3	58.0	4056.0	67145	10.085 ng/ml
alpha-PVP	4.377	121953	3167.7	49.3	1171.9	511348	10.041 ng/ml
Alprazolam	5.776	63966	2391.9	117.5	5951.0	251882	10.507 ng/ml
Amphetamine	3.064	198617	1293.9	53.0	1750.2	315242	10.666 ng/ml
Benzoylcegonine	3.894	4010	162.1	8.6	138.4	9161	11.695 ng/ml
Buprenorphine	5.665	857	95.4	14.0	338.9	34629	0.940 ng/ml
Bupropion	4.791	103760	5440.9	63.1	2575.1	358883	10.164 ng/ml
Carisoprodol	5.721	59642	2657.4	70.2	639.5	290820	9.907 ng/ml
Citalopram	5.240	64396	513.1	42.9	3012.7	289711	10.064 ng/ml
Clonazepam	5.620	60605	465.5	31.0	46187.5	99660	9.051 ng/ml
Cocaine	4.281	103965	6308.6	44.2	2977.2	784616	10.052 ng/ml
Codeine	2.588	12722	703.5	112.0	741.8	69547	9.905 ng/ml
Cyclobenzaprine	5.627	60521	84732.1	9.4	7632.8	206882	10.166 ng/ml
Dextromethorphan	5.284	47591	1430.8	78.7	1601.3	216771	10.272 ng/ml
Dextrorphan	4.136	32881	64676.2	212.1	3192.9	378343	10.031 ng/ml
Diazepam	5.942	49643	1974.2	88.8	1981.7	237363	9.723 ng/ml
Dihydrocodeine	2.567	34581	2585.7	56.8	1220.0	186077	10.297 ng/ml
Diphenhydramine	5.306	216314	3265.7	28.1	18331.6	1079722	10.229 ng/ml
Doxylamine	4.543	266431	13916.8	101.1	8754.7	1124438	9.824 ng/ml
EDDP	5.279	32524	720.6	222.9	2685.0	364969	10.201 ng/ml
Fentanyl	5.095	6144	69.2	82.1	1414.3	290406	1.044 ng/ml
Fluoxetine	5.709	69614	7325.4	7.4	3319.5	231227	10.449 ng/ml
Hydrocodone	3.035	50028	840.1	36.9	462.1	282238	9.534 ng/ml
Hydromorphone	1.627	36526	4930.5	78.0	1662.8	121278	9.926 ng/ml
Ketamine	4.056	95399	4078.5	39.2	385.6	413631	10.108 ng/ml
Lamotrigine	4.294	8665	607.9	89.1	10230.6	434359	11.072 ng/ml
Lorazepam	5.749	53858	2549.0	51.8	81.9	464357	10.200 ng/ml
MDA	3.216	145099	1211.6	23.4	293.8	434359	10.133 ng/ml
MDMA	3.308	81529	372.4	87.5	897.7	82207	9.776 ng/ml
Meprobamate	4.920	90192	1937.7	29.2	87.1	204807	7.994 ng/ml
Methadone	5.662	113037	2102.2	56.0	1713.5	552866	10.191 ng/ml



# AM #28 Multi-Drug Quant. Results

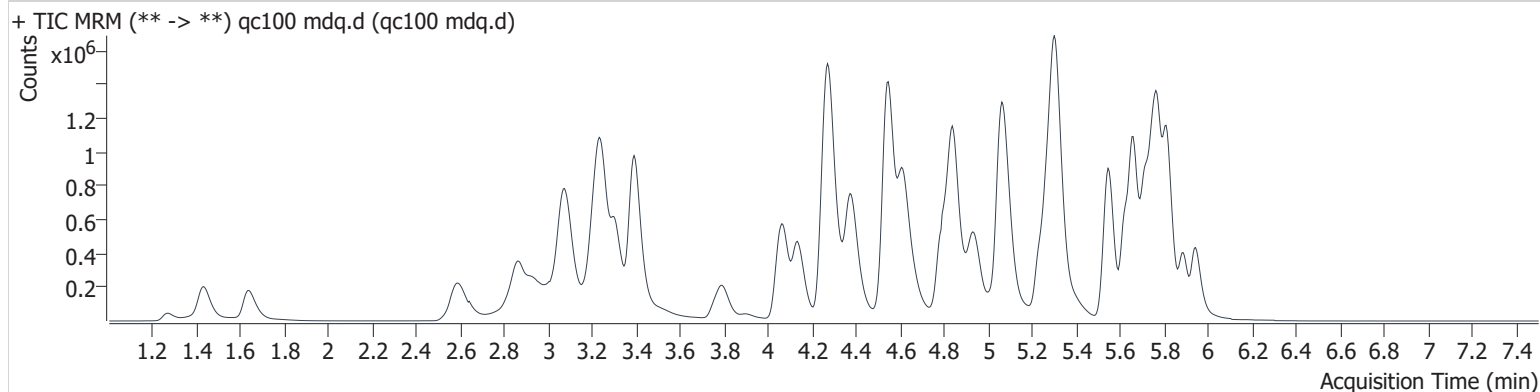
Name	RT	Resp.	S/N	Ratio	S/N	ISTD Resp.	Final Conc.
Methamphetamine	3.242	267288	∞	40.8	∞	565365	9.119 ng/ml
Metoprolol	4.339	20334	21382.6	93.6	1104.7	1124438	9.940 ng/ml
Mirtazapine	4.615	136989	5544.8	49.5	2045.1	552866	10.314 ng/ml
Mitragynine	5.224	17781	29598.6	32.4	79.3	552866	10.410 ng/ml
Morphine	1.256	5456	2180.6	21.9	67.8	7102	9.047 ng/ml
Norbuprenorphine	5.007	170	241.7	85.6	44.6	6763	0.971 ng/ml
Nordiazepam	5.891	48635	3253.0	61.2	6699.9	173887	9.800 ng/ml
Norfentanyl	4.101	2122	188.8	296.7	173.9	785643	0.976 ng/ml
Norhydrocodone	3.087	2605	7975.2	16.6	335.9	91431	9.523 ng/ml
Noroxycodone	2.928	42220	396.3	39.8	547.9	149418	9.748 ng/ml
O-desmethyl-tramadol	3.389	218086	5326.0	6.4	1301.0	1135649	10.406 ng/ml
Oxazepam	5.751	83520	779.1	74.8	439.4	464357	9.894 ng/ml
Oxycodone	2.850	105011	832.8	26.5	6941.4	437841	10.101 ng/ml
Oxymorphone	1.419	53550	2824.0	44.3	4282.8	201766	9.649 ng/ml
Phentermine	3.795	28377	74.1	10.3	120.0	425068	10.100 ng/ml
Promethazine	5.549	88136	34968.6	34.1	430.0	423694	10.179 ng/ml
Quetiapine	5.531	67769	4722.2	54.9	27058.9	82577	9.955 ng/ml
Sertraline	5.776	29748	786.0	104.8	45946.3	122494	10.168 ng/ml
Temazepam	5.813	143295	2037.6	30.6	312.8	673706	9.801 ng/ml
Tramadol	4.262	327033	2532.4	3.4	109.7	1155415	9.068 ng/ml
Trazodone	5.064	90800	4172.5	75.9	730.8	387375	10.176 ng/ml
Venlafaxine	5.055	154776	547.5	40.2	580.7	865958	10.589 ng/ml
Zolpidem	4.839	227411	4485.6	31.6	2623.9	988464	8.586 ng/ml

# AM #28 Multi-Drug Quant. Results

**Batch results** D:\MassHunter\Data\2020 Data\am 27-28 6-25-20\QuantResults\mdq.batch.bin  
**Calibration Last Update** 6/29/2020 3:23:50 PM

<b>Instrument</b>	69679	<b>Data File</b>	qc100 mdq.d
<b>Type</b>	QC	<b>Sample</b>	qc100 mdq.d
<b>Acq. Method</b>	MDQP1 5-27-20.m	<b>Operator</b>	Anne Nord
<b>Sample Position</b>	P2-B6	<b>Comment</b>	
<b>Injection Volume</b>	2		
<b>Acq. Date-Time</b>	6/25/2020 8:09:01 PM		

## Sample Chromatogram



Name	RT	Resp.	S/N	Ratio	S/N	ISTD Resp.	Final Conc.
6-MAM	3.151	21636	23803.9	83.4	2389.7	51469	9.979 ng/ml
7-aminoclonazepam	4.272	445110	10736.5	90.5	35243.8	176046	111.347 ng/ml
a-hydroxyalprazolam	5.697	101179	3018.6	57.8	2699.4	55521	110.771 ng/ml
alpha-PVP	4.377	1293144	15582.5	50.9	12069.3	521655	102.040 ng/ml
Alprazolam	5.771	615805	2402.3	113.9	4649.8	228346	99.310 ng/ml
Amphetamine	3.079	1869359	5703.3	51.9	12384.1	315187	106.316 ng/ml
Benzoylcegonine	3.899	39484	1504.2	6.7	267.4	10432	99.489 ng/ml
Buprenorphine	5.670	11158	809.3	16.3	421.1	39193	10.759 ng/ml
Bupropion	4.791	1102303	92704.7	63.5	9526.2	381582	104.822 ng/ml
Carisoprodol	5.726	534176	15607.4	69.3	2637.5	249013	111.307 ng/ml
Citalopram	5.240	740239	669.1	40.9	4207.7	323290	102.067 ng/ml
Clonazepam	5.615	562859	1756.4	31.3	249157.7	90734	110.974 ng/ml
Cocaine	4.281	1015290	2362.7	45.7	39026.8	734596	104.279 ng/ml
Codeine	2.604	135012	1048.2	112.0	11863.4	69618	105.904 ng/ml
Cyclobenzaprine	5.627	713312	1555074.7	8.8	1879.2	237646	107.136 ng/ml
Dextromethorphan	5.284	512316	924.8	78.9	1182441.0	243903	105.668 ng/ml
Dextrorphan	4.136	347962	771164.1	215.8	28036.8	393021	103.296 ng/ml
Diazepam	5.942	513218	14788.3	87.3	29115.0	232458	105.824 ng/ml
Dihydrocodeine	2.582	352822	9066.3	60.4	41520.0	188534	105.236 ng/ml
Diphenhydramine	5.311	2433896	154840.6	29.7	8431.7	1216876	101.410 ng/ml
Doxylamine	4.543	2870868	160112.1	99.5	24655.0	1156896	102.986 ng/ml
EDDP	5.273	473068	1154.0	234.9	139768.7	536878	102.634 ng/ml
Fentanyl	5.095	69750	940.1	80.8	2195.3	333916	9.535 ng/ml
Fluoxetine	5.709	724481	345832.7	7.6	129052.2	256097	111.289 ng/ml
Hydrocodone	3.041	511233	6941.0	38.1	995.3	280742	112.098 ng/ml
Hydromorphone	1.637	386217	20408.2	74.8	21094.3	119255	100.088 ng/ml
Ketamine	4.056	977771	14115.8	38.6	1328.0	412404	107.557 ng/ml
Lamotrigine	4.299	79952	1500.9	89.0	1721.4	416505	111.769 ng/ml
Lorazepam	5.744	430089	7112.6	52.7	994.1	396639	106.763 ng/ml
MDA	3.221	1402937	18634.3	23.8	6324.9	416505	109.899 ng/ml
MDMA	3.308	848473	75864.1	89.4	28085.9	83612	107.931 ng/ml
Meprobamate	4.920	519316	5769.0	30.3	4096.6	192470	108.646 ng/ml
Methadone	5.662	1323189	52793.9	55.0	12495.8	640419	102.873 ng/ml

# AM #28 Multi-Drug Quant. Results

Name	RT	Resp.	S/N	Ratio	S/N	ISTD Resp.	Final Conc.
Methamphetamine	3.247	1202572	∞	44.1	2986.6	525747	114.269 ng/ml
Metoprolol	4.339	199643	2262.4	94.9	7932.4	1156896	105.320 ng/ml
Mirtazapine	4.615	1558106	15448.4	49.3	92310.2	640419	103.109 ng/ml
Mitragynine	5.224	211929	404769.3	34.1	142196.9	640419	102.558 ng/ml
Morphine	1.271	51885	1352.2	22.2	413.2	6394	101.306 ng/ml
Norbuprenorphine	5.012	1811	1647.3	96.9	2287.5	8098	11.413 ng/ml
Nordiazepam	5.886	493528	55893.0	60.7	64756.5	162092	106.445 ng/ml
Norfentanyl	4.101	22476	171.2	294.9	133.8	773702	9.902 ng/ml
Norhydrocodone	3.092	25187	1173.2	18.5	425.0	75021	112.910 ng/ml
Noroxycodone	2.938	422025	1074.8	39.5	725.3	142272	112.913 ng/ml
O-desmethyl-tramadol	3.394	2196561	183766.6	6.1	3882.8	1123135	101.030 ng/ml
Oxazepam	5.751	722604	8983.4	72.8	1493.1	396639	108.814 ng/ml
Oxycodone	2.860	1061911	6324.2	28.8	2278.7	449725	107.939 ng/ml
Oxymorphone	1.429	540982	21809.8	44.5	13618.5	201106	105.781 ng/ml
Phentermine	3.795	324957	513.2	7.9	593.0	414218	115.136 ng/ml
Promethazine	5.549	1116815	20955.4	35.0	5511.6	517677	101.727 ng/ml
Quetiapine	5.531	739323	24101.7	55.0	463154.3	91604	106.471 ng/ml
Sertraline	5.776	309763	2999.6	105.1	12261.1	130895	105.341 ng/ml
Temazepam	5.813	1454700	34249.7	31.1	2063.1	645774	103.434 ng/ml
Tramadol	4.262	2439700	4583.6	3.3	886.3	1146962	103.958 ng/ml
Trazodone	5.064	1017405	4492.1	73.4	3833.7	437593	108.041 ng/ml
Venlafaxine	5.055	1705253	76530.0	39.2	4777.9	892488	106.583 ng/ml
Zolpidem	4.839	2273744	7481.6	31.9	4524.5	838830	117.126 ng/ml

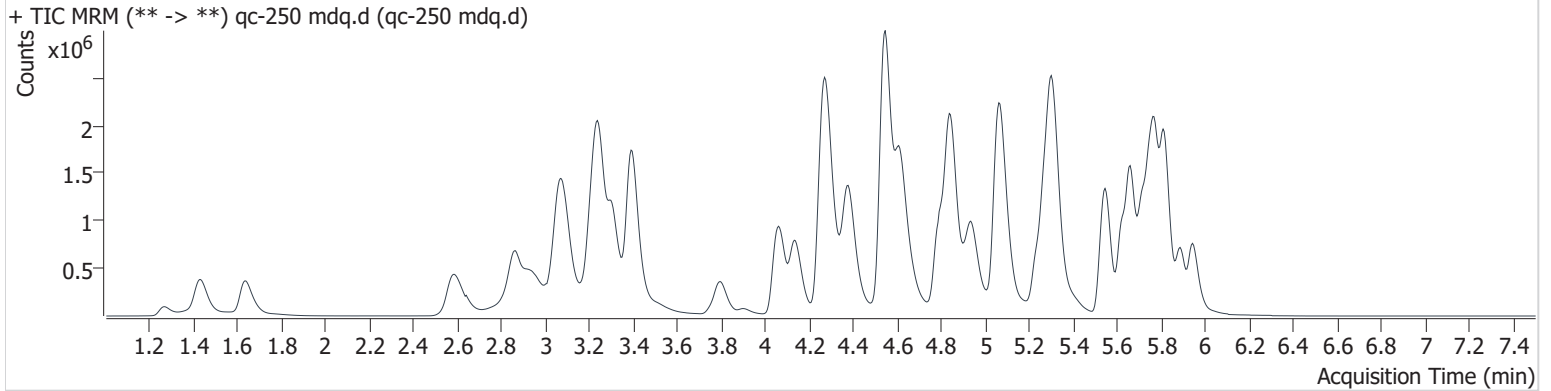


# AM #28 Multi-Drug Quant. Results

**Batch results** D:\MassHunter\Data\2020 Data\am 27-28 6-25-20\QuantResults\mdq.batch.bin  
**Calibration Last Update** 6/29/2020 3:23:50 PM

**Instrument** 69679 **Data File** qc-250 mdq.d  
**Type** QC **Sample** qc-250 mdq.d  
**Acq. Method** MDQP1 5-27-20.m **Operator** Anne Nord  
**Sample Position** P2-C6 **Comment**  
**Injection Volume** 2  
**Acq. Date-Time** 6/25/2020 8:19:49 PM  
**Sample Info.**

## Sample Chromatogram



Name	RT	Resp.	S/N	Ratio	S/N	ISTD Resp.	Final Conc.
6-MAM	3.151	50696	1271.8	79.9	5597.1	48369	24.924 ng/ml
7-aminoclonazepam	4.272	823221	3086.8	88.8	13660.8	141264	257.618 ng/ml
a-hydroxyalprazolam	5.697	194939	1306.7	58.8	2359.7	46639	254.581 ng/ml
alpha-PVP	4.377	2729484	31535.9	50.7	26735.1	454378	246.916 ng/ml
Alprazolam	5.776	1268302	26726.4	113.6	322.7	189483	244.600 ng/ml
Amphetamine	3.074	4053722	7044.0	47.8	20709.1	281801	258.862 ng/ml
Benzoylcegonine	3.899	95580	9288.5	7.8	636.8	9750	257.330 ng/ml
Buprenorphine	5.670	18651	3669.5	15.6	3399.3	28309	24.890 ng/ml
Bupropion	4.791	2239136	302679.1	62.2	10207.8	324439	250.936 ng/ml
Carisoprodol	5.726	1030165	2722.2	68.8	16901.5	205426	261.288 ng/ml
Citalopram	5.235	1273129	13223.7	41.7	634275.9	233095	243.231 ng/ml
Clonazepam	5.615	1157642	73109.7	31.4	426881.5	78376	267.029 ng/ml
Cocaine	4.281	2117401	176597.5	45.5	68876.1	626427	254.941 ng/ml
Codeine	2.604	294125	7232.5	111.3	14333.4	62626	256.606 ng/ml
Cyclobenzaprine	5.627	1063153	766587.6	9.0	50830.8	152435	249.346 ng/ml
Dextromethorphan	5.284	789623	8741.5	78.2	43350.9	156337	255.299 ng/ml
Dextrorphan	4.136	710987	20155.6	220.0	1024760.7	339988	244.150 ng/ml
Diazepam	5.942	1065162	16598.5	86.8	10785.8	201969	253.253 ng/ml
Dihydrocodeine	2.577	797045	213924.8	62.3	12979.9	179281	250.240 ng/ml
Diphenhydramine	5.312	4228109	71930.2	29.4	80537.1	874628	244.992 ng/ml
Doxylamine	4.543	6553665	4043.6	98.9	14987.6	1073487	253.381 ng/ml
EDDP	5.279	1032051	116342.0	229.4	3220.8	487742	246.744 ng/ml
Fentanyl	5.100	110056	1441.8	77.9	9980.9	212147	23.553 ng/ml
Fluoxetine	5.709	976540	7243.2	7.7	182680.2	149828	258.441 ng/ml
Hydrocodone	3.041	1093495	1413.2	37.3	1339.3	256416	264.564 ng/ml
Hydromorphone	1.637	884758	6269.7	74.5	22366.6	112604	241.854 ng/ml
Ketamine	4.056	2136042	19850.9	38.5	4024.1	379750	255.715 ng/ml
Lamotrigine	4.299	146234	5253.6	91.1	6413.7	341064	250.395 ng/ml
Lorazepam	5.744	711840	13129.4	52.3	2451.9	295552	238.809 ng/ml
MDA	3.216	2652521	15017.7	24.3	11207.3	341064	254.861 ng/ml
MDMA	3.308	1783246	2228.5	88.5	5035.8	69146	275.614 ng/ml
Meprobamate	4.920	984429	12209.7	29.9	17799.0	170122	246.329 ng/ml
Methadone	5.662	2229817	60520.9	54.5	73811.4	444664	249.662 ng/ml



# AM #28 Multi-Drug Quant. Results

Name	RT	Resp.	S/N	Ratio	S/N	ISTD Resp.	Final Conc.
Methamphetamine	3.247	2669663	∞	43.3	∞	519821	279.324 ng/ml
Metoprolol	4.339	408264	554748.9	95.8	11185.9	1073487	233.586 ng/ml
Mirtazapine	4.615	2994923	25771.9	49.2	21227.0	444664	285.810 ng/ml
Mitragynine	5.224	368719	885803.9	33.4	13405.7	444664	256.246 ng/ml
Morphine	1.266	124708	14314.3	21.8	3918.2	6740	231.738 ng/ml
Norbuprenorphine	5.007	3344	4377.5	100.9	1002.2	5659	30.724 ng/ml
Nordiazepam	5.891	998894	10023.5	60.7	396672.6	138196	252.664 ng/ml
Norfentanyl	4.101	50009	5645.8	295.6	1139.8	693296	24.497 ng/ml
Norhydrocodone	3.092	50378	760.4	19.7	455.9	59179	286.388 ng/ml
Noroxycodone	2.938	888266	4395.4	39.9	865.3	126043	269.787 ng/ml
O-desmethyl-tramadol	3.395	4987331	267448.4	6.0	8967.5	1048460	244.957 ng/ml
Oxazepam	5.751	1294462	14704.2	72.7	4827.7	295552	262.920 ng/ml
Oxycodone	2.860	2371291	11947.1	29.1	10754.0	430594	253.022 ng/ml
Oxymorphone	1.429	1207776	12220.0	44.1	15830.7	185943	256.656 ng/ml
Phentermine	3.800	721075	898.4	7.9	1108.2	385271	274.223 ng/ml
Promethazine	5.549	1662263	33165.6	35.6	14773.7	319764	244.546 ng/ml
Quetiapine	5.531	1486664	16205.0	55.7	35858.2	79854	246.866 ng/ml
Sertraline	5.776	387488	6508.9	106.5	613199.1	68694	252.080 ng/ml
Temazepam	5.818	3062929	56814.6	30.4	2498.1	560417	250.900 ng/ml
Tramadol	4.257	5095900	4942.6	3.3	723.9	1042771	245.968 ng/ml
Trazodone	5.069	1906862	8891.4	75.7	63329.2	356871	249.332 ng/ml
Venlafaxine	5.055	3700782	1947.0	39.1	1437.6	797416	257.912 ng/ml
Zolpidem	4.839	5003700	14564.1	31.7	10932.5	905550	240.298 ng/ml

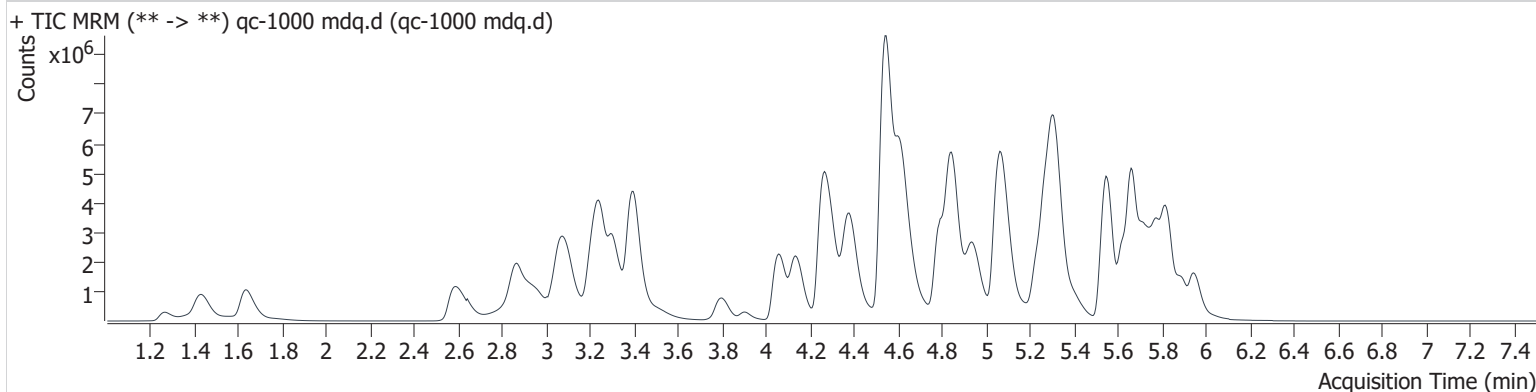


# AM #28 Multi-Drug Quant. Results

Batch results D:\MassHunter\Data\2020 Data\am 27-28 6-25-20\QuantResults\mdq.batch.bin  
Calibration Last Update 6/29/2020 3:23:50 PM

Instrument 69679 Data File qc-1000 mdq.d  
Type QC Sample qc-1000 mdq.d  
Acq. Method MDQP1 5-27-20.m Operator Anne Nord  
Sample Position P2-D6 Comment  
Injection Volume 2  
Acq. Date-Time 6/25/2020 8:30:37 PM  
Sample Info.

## Sample Chromatogram



Name	RT	Resp.	S/N	Ratio	S/N	ISTD Resp.	Final Conc.
6-MAM	3.151	186112	13632.4	77.3	4294.1	44115	100.409 ng/ml
7-aminoclonazepam	4.277	1124891	3000.2	87.3	21909.2	60821	819.238 ng/ml
a-hydroxyalprazolam	5.692	323493	1256.6	59.8	1559.4	21624	912.228 ng/ml
alpha-PVP	4.377	8840103	523464.3	51.3	74492.3	351718	1032.326 ng/ml
Alprazolam	5.776	2849701	11242.6	113.1	8328.1	100476	1032.304 ng/ml
Amphetamine	3.084	8283268	34398.7	47.4	39991.5	177244	842.562 ng/ml
Benzoylcegonine	3.899	515001	47581.9	7.6	2810.1	9789	1380.069 ng/ml
Buprenorphine	5.675	60312	3528.8	15.0	1327.8	19830	114.883 ng/ml
Bupropion	4.789	7361993	39217.0	61.3	194791.6	285660	938.039 ng/ml
Carisoprodol	5.726	1646687	46016.4	68.2	8497.1	81267	1058.221 ng/ml
Citalopram	5.235	3720235	145287.5	41.6	374307.5	164993	1003.578 ng/ml
Clonazepam	5.610	1754926	34893.6	32.4	937011.9	38626	825.591 ng/ml
Cocaine	4.281	5638278	7892.9	45.3	416059.2	418058	1017.043 ng/ml
Codeine	2.609	850484	1531.2	108.1	19821.1	45473	1022.153 ng/ml
Cyclobenzaprine	5.627	4303939	208025.7	8.8	679.3	144893	1062.962 ng/ml
Dextromethorphan	5.279	2586251	629533.4	77.5	257175.9	125503	1044.274 ng/ml
Dextrorphan	4.136	2420896	875825.1	221.9	8390.9	286895	985.535 ng/ml
Diazepam	5.947	2922813	10897.7	85.7	12416.9	138721	1012.772 ng/ml
Dihydrocodeine	2.577	2550727	32586.7	63.6	22128.4	159812	898.825 ng/ml
Diphenhydramine	5.315	14912732	441769.4	29.9	119223.5	731817	1032.468 ng/ml
Doxylamine	4.543	24005142	1591982.9	98.2	571972.9	953263	1045.180 ng/ml
EDDP	5.273	4085833	7529.6	238.9	1014538.3	465895	1023.276 ng/ml
Fentanyl	5.100	545520	2354.9	76.3	18143.2	230862	106.976 ng/ml
Fluoxetine	5.713	3914591	411268.1	7.5	3710.6	146337	1065.557 ng/ml
Hydrocodone	3.035	3378767	17000.9	37.3	2383.3	217071	969.685 ng/ml
Hydromorphone	1.632	3014395	43376.5	74.6	44061.2	95895	965.534 ng/ml
Ketamine	4.056	6777708	55164.3	37.5	22003.7	315937	976.382 ng/ml
Lamotrigine	4.304	229284	4914.3	92.6	7067.7	229913	583.209 ng/ml
Lorazepam	5.739	650433	3859.5	52.5	2302.5	86841	745.524 ng/ml
MDA	3.211	6399004	71566.6	24.9	69377.4	229913	914.266 ng/ml
MDMA	3.309	5011243	110678.3	87.7	70443.3	54313	988.256 ng/ml
Meprobamate	4.909	1823124	1040900.3	29.1	10504.1	102837	778.684 ng/ml
Methadone	5.662	9822553	140971.4	51.2	159281.2	467803	1045.345 ng/ml



# AM #28 Multi-Drug Quant. Results

Name	RT	Resp.	S/N	Ratio	S/N	ISTD Resp.	Final Conc.	
Methamphetamine	3.247	5179025	2108.0	40.5	9039.6	279132	1056.875	ng/ml
Metoprolol	4.339	964205	365767.8	96.5	60364.7	953263	623.272	ng/ml ocr
Mirtazapine	4.615	11694879	110323.1	47.4	186470.3	467803	1061.419	ng/ml ocr
Mitragynine	5.219	1459547	30049.8	31.8	3011.5	467803	962.803	ng/ml ocr
Morphine	1.266	429182	6264.1	20.8	1039.7	5520	975.682	ng/ml
Norbuprenorphine	5.002	13277	2814.7	105.2	166.3	6249	111.397	ng/ml
Nordiazepam	5.891	2325372	6932.6	60.0	8786.2	78652	1033.405	ng/ml
Norfentanyl	4.096	145046	37288.0	295.8	1095.8	463156	106.155	ng/ml
Norhydrocodone	3.092	170559	1288.1	28.3 High	2237.6	38036	1508.864	ng/ml ocr
Noroxycodone	2.943	2183463	1717.2	40.3	7021.9	81578	1027.752	ng/ml
O-desmethyl-tramadol	3.394	16615003	6642.2	6.0	4803.2	818855	1043.125	ng/ml
Oxazepam	5.746	1344873	58632.0	73.0	14248.2	86841	932.047	ng/ml
Oxycodone	2.860	8142458	11099.7	29.1	7017.1	374988	1000.480	ng/ml
Oxymorphone	1.424	3687254	7042.4	44.1	7267.2	147560	989.858	ng/ml
Phentermine	3.795	1944671	1024.8	7.5	6162.5	288851	985.562	ng/ml
Promethazine	5.554	9038196	158522.9	34.8	21032.8	401209	1058.381	ng/ml
Quetiapine	5.525	4520850	4989935.5	57.8	3755674.1	71722	838.137	ng/ml
Sertraline	5.776	1507334	113173.4	105.6	236756.6	63796	1058.160	ng/ml
Temazepam	5.818	7469887	438879.1	30.2	14352.6	308451	1111.608	ng/ml
Tramadol	4.252	14444788	9497.8	3.2	2802.1	704481	1049.588	ng/ml
Trazodone	5.069	5882332	29752.8	76.6	22253.1	318080	864.907	ng/ml
Venlafaxine	5.055	12395588	881603.7	37.4	96168.4	617714	1112.908	ng/ml
Zolpidem	4.839	17281651	26973.7	26.8	25811.6	715424	1055.484	ng/ml

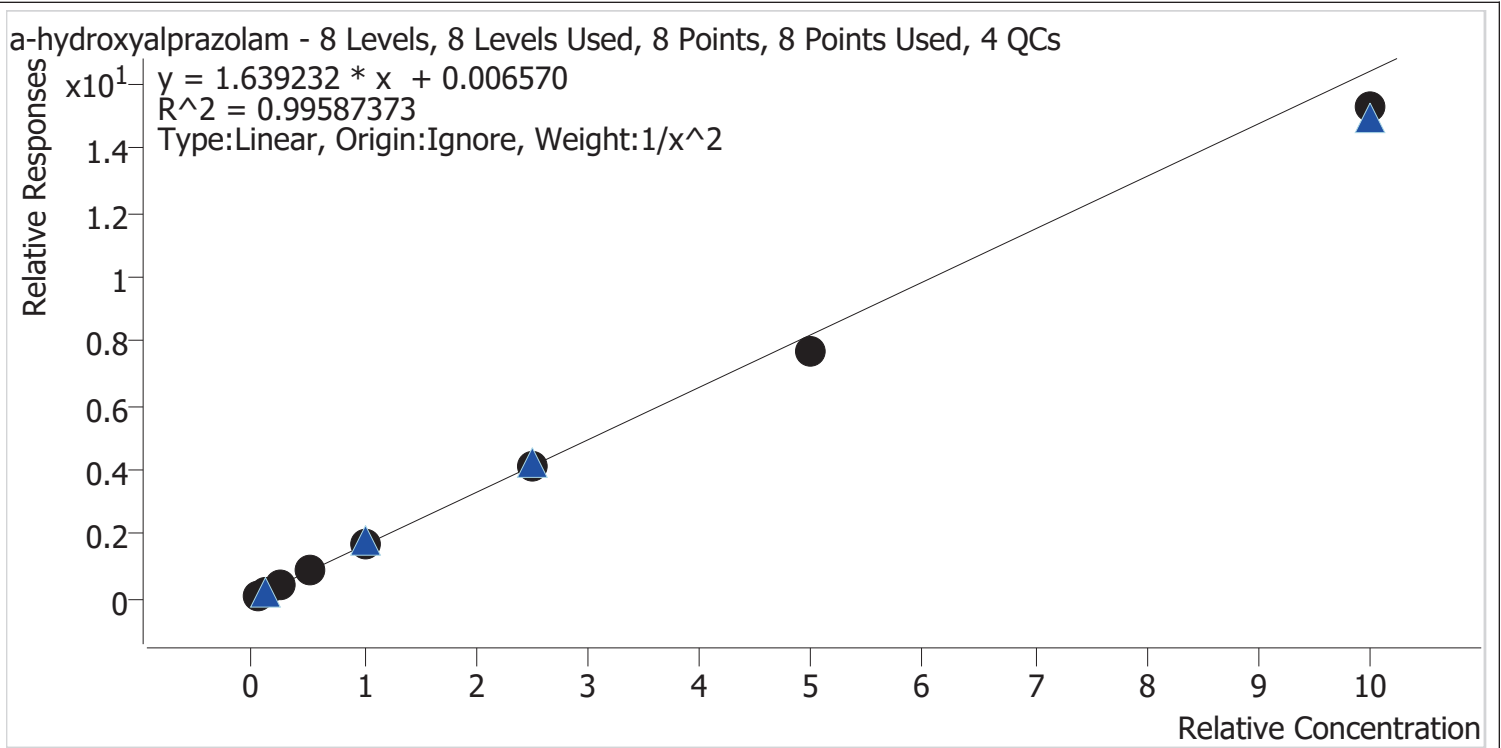
ocr = outside curve range





# Compound Calibration Report

<b>Batch results</b>	D:\MassHunter\Data\2020 Data\lam 27-28 6-25-20\QuantResults\mdq.batch.bin		
<b>Last Cal. Update</b>	6/29/2020 3:23 PM		
<b>Analyst Name</b>	ISP\datastor		
<b>Analyte</b>	a-hydroxyalprazolam	<b>Internal Standard</b>	a-hydroxyalprazolam-D5



Sample	Level	Enabled	Expected Concentration	Final Concentration	Accuracy
cal 1 mdq	1	✓	5.0	4.8	96.2
cal 2 mdq	2	✓	10.0	10.6	105.7
cal 3 mdq	3	✓	25.0	25.0	100.1
cal 4 mdq	4	✓	50.0	54.6	109.1
cal 5 mdq	5	✓	100.0	101.9	101.9
cal 6 mdq	6	✓	250.0	250.3	100.1
cal 7 mdq	7	✓	500.0	468.8	93.8
cal 8 mdq	8	✓	1000.0	931.5	93.1





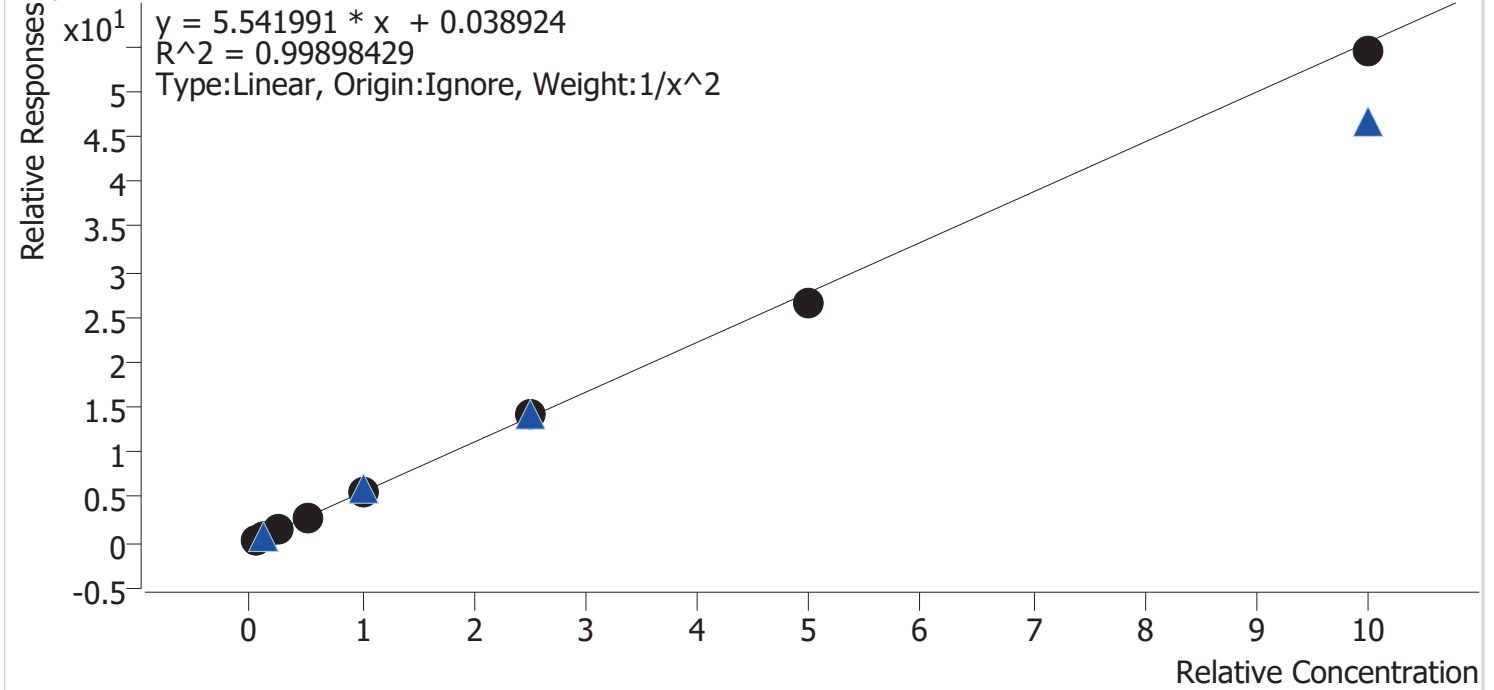


# Compound Calibration Report



**Batch results** D:\MassHunter\Data\2020 Data\am 27-28 6-25-20\QuantResults\mdq.batch.bin  
**Last Cal. Update** 6/29/2020 3:23 PM  
**Analyst Name** ISP\datastor  
**Analyte** Amphetamine **Internal Standard** Amphetamine-D11

Amphetamine - 8 Levels, 8 Levels Used, 8 Points, 8 Points Used, 4 QCs



Sample	Level	Enabled	Expected Concentration	Final Concentration	Accuracy
cal 1 mdq	1	✓	5.0	5.0	100.5
cal 2 mdq	2	✓	10.0	9.8	98.2
cal 3 mdq	3	✓	25.0	25.0	100.0
cal 4 mdq	4	✓	50.0	51.3	102.5
cal 5 mdq	5	✓	100.0	101.8	101.8
cal 6 mdq	6	✓	250.0	259.0	103.6
cal 7 mdq	7	✓	500.0	475.7	95.1
cal 8 mdq	8	✓	1000.0	981.0	98.1



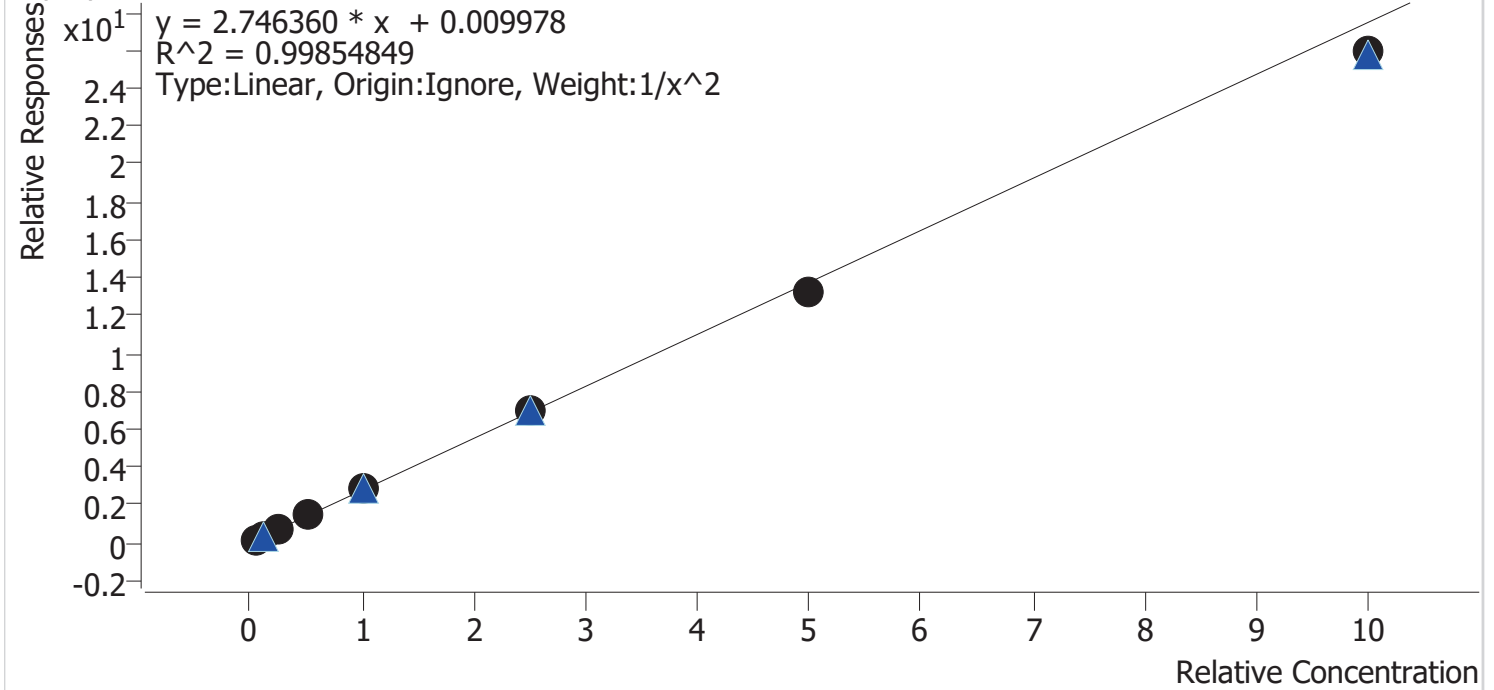


# Compound Calibration Report



**Batch results** D:\MassHunter\Data\2020 Data\lam 27-28 6-25-20\QuantResults\mdq.batch.bin  
**Last Cal. Update** 6/29/2020 3:23 PM  
**Analyst Name** ISP\datastor  
**Analyte** Bupropion **Internal Standard** Bupropion-D9

Bupropion - 8 Levels, 8 Levels Used, 8 Points, 8 Points Used, 4 QCs



Sample	Level	Enabled	Expected Concentration	Final Concentration	Accuracy
cal 1 mdq	1	✓	5.0	5.0	99.1
cal 2 mdq	2	✓	10.0	10.0	100.3
cal 3 mdq	3	✓	25.0	25.2	100.7
cal 4 mdq	4	✓	50.0	52.6	105.2
cal 5 mdq	5	✓	100.0	102.7	102.7
cal 6 mdq	6	✓	250.0	251.5	100.6
cal 7 mdq	7	✓	500.0	485.0	97.0
cal 8 mdq	8	✓	1000.0	943.8	94.4

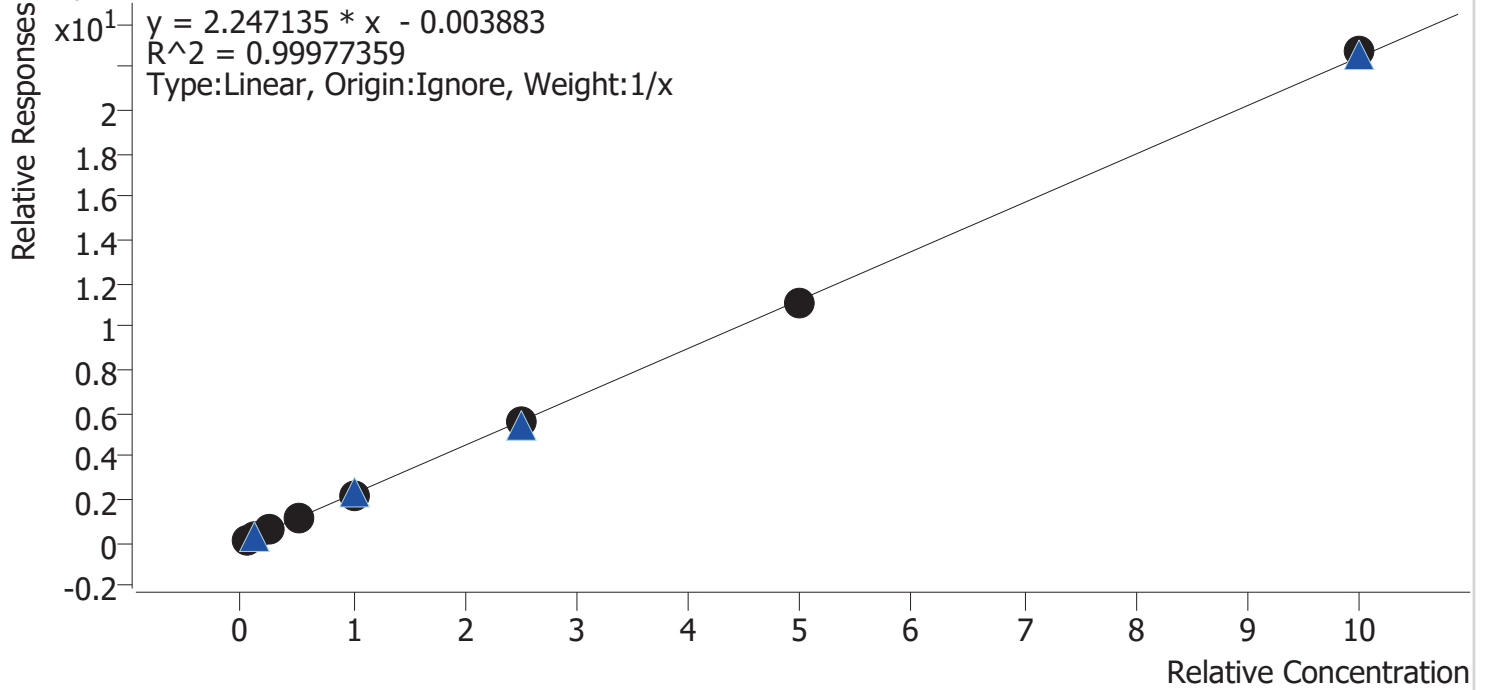


# Compound Calibration Report



**Batch results** D:\MassHunter\Data\2020 Data\lam 27-28 6-25-20\QuantResults\mdq.batch.bin  
**Last Cal. Update** 6/29/2020 3:23 PM  
**Analyst Name** ISP\datastor  
**Analyte** Citalopram **Internal Standard** Citalopram-D6

Citalopram - 8 Levels, 8 Levels Used, 8 Points, 8 Points Used, 4 QCs



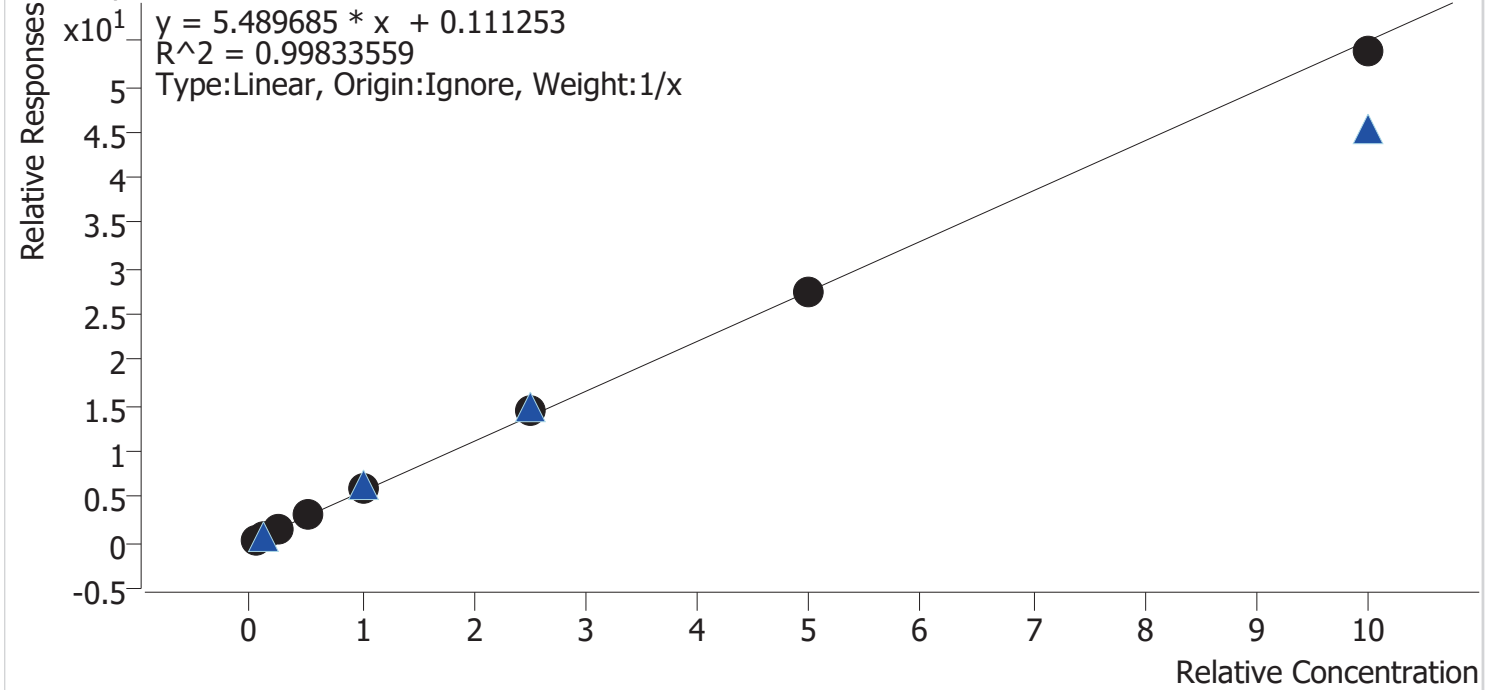
Sample	Level	Enabled	Expected Concentration	Final Concentration	Accuracy
cal 1 mdq	1	✓	5.0	5.5	110.5
cal 2 mdq	2	✓	10.0	9.7	97.1
cal 3 mdq	3	✓	25.0	23.9	95.8
cal 4 mdq	4	✓	50.0	49.7	99.3
cal 5 mdq	5	✓	100.0	97.9	97.9
cal 6 mdq	6	✓	250.0	249.5	99.8
cal 7 mdq	7	✓	500.0	492.4	98.5
cal 8 mdq	8	✓	1000.0	1011.4	101.1

# Compound Calibration Report



**Batch results** D:\MassHunter\Data\2020 Data\lam 27-28 6-25-20\QuantResults\mdq.batch.bin  
**Last Cal. Update** 6/29/2020 3:23 PM  
**Analyst Name** ISP\datastor  
**Analyte** Clonazepam **Internal Standard** Clonazepam-D4

Clonazepam - 8 Levels, 8 Levels Used, 8 Points, 8 Points Used, 4 QCs



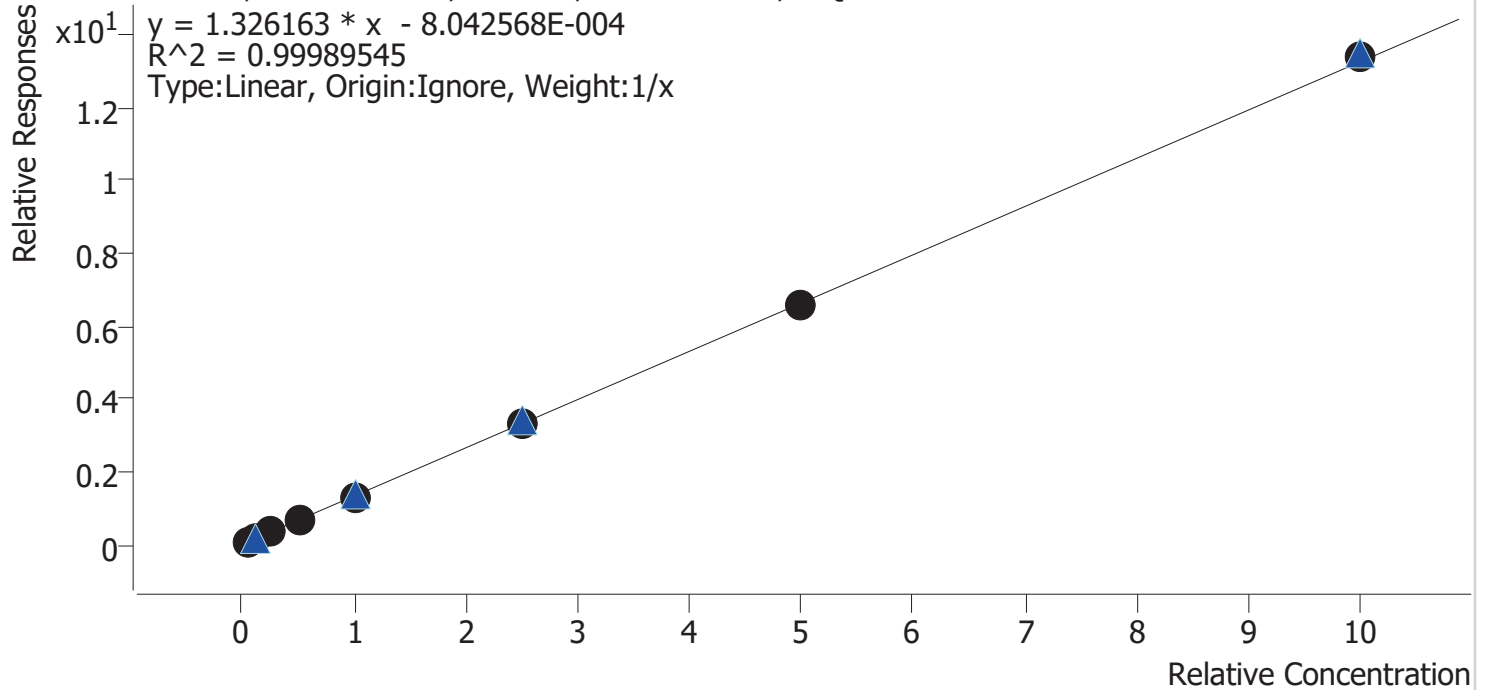
Sample	Level	Enabled	Expected Concentration	Final Concentration	Accuracy
cal 1 mdq	1	✓	5.0	3.7	74.5
cal 2 mdq	2	✓	10.0	9.9	99.1
cal 3 mdq	3	✓	25.0	26.1	104.4
cal 4 mdq	4	✓	50.0	55.7	111.5
cal 5 mdq	5	✓	100.0	108.6	108.6
cal 6 mdq	6	✓	250.0	262.8	105.1
cal 7 mdq	7	✓	500.0	494.8	99.0
cal 8 mdq	8	✓	1000.0	978.4	97.8

# Compound Calibration Report



**Batch results** D:\MassHunter\Data\2020 Data\am 27-28 6-25-20\QuantResults\mdq.batch.bin  
**Last Cal. Update** 6/29/2020 3:23 PM  
**Analyst Name** ISP\datastor  
**Analyte** Cocaine **Internal Standard** Cocaine-d3

Cocaine - 8 Levels, 8 Levels Used, 8 Points, 8 Points Used, 4 QCs



Sample	Level	Enabled	Expected Concentration	Final Concentration	Accuracy
cal 1 mdq	1	✓	5.0	5.2	104.8
cal 2 mdq	2	✓	10.0	10.0	99.7
cal 3 mdq	3	✓	25.0	24.1	96.3
cal 4 mdq	4	✓	50.0	50.2	100.4
cal 5 mdq	5	✓	100.0	99.8	99.8
cal 6 mdq	6	✓	250.0	248.0	99.2
cal 7 mdq	7	✓	500.0	494.6	98.9
cal 8 mdq	8	✓	1000.0	1008.0	100.8





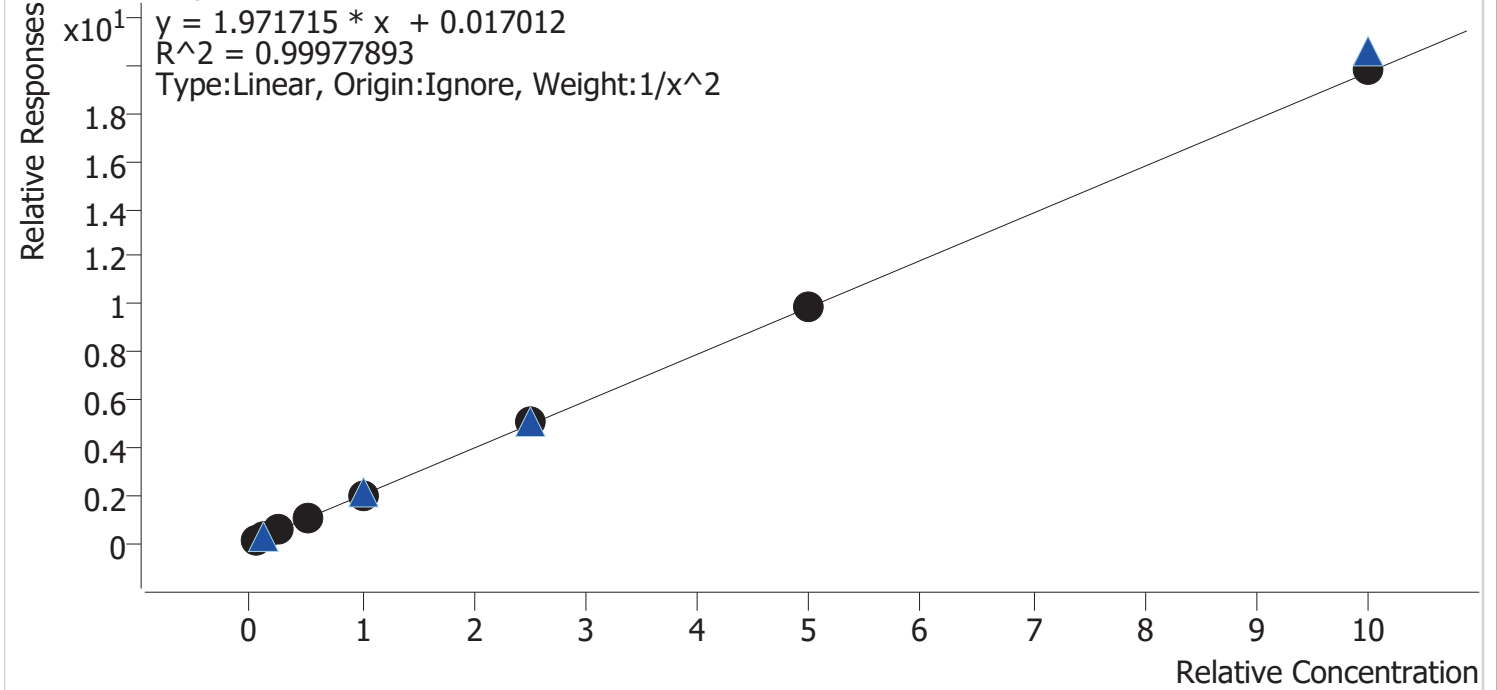


# Compound Calibration Report



**Batch results** D:\MassHunter\Data\2020 Data\lam 27-28 6-25-20\QuantResults\mdq.batch.bin  
**Last Cal. Update** 6/29/2020 3:23 PM  
**Analyst Name** ISP\datastor  
**Analyte** Dextromethorphan **Internal Standard** Dextromethorphan-D3

Dextromethorphan - 8 Levels, 8 Levels Used, 8 Points, 8 Points Used, 4 QCs



Sample	Level	Enabled	Expected Concentration	Final Concentration	Accuracy
cal 1 mdq	1	✓	5.0	5.0	100.0
cal 2 mdq	2	✓	10.0	10.0	100.2
cal 3 mdq	3	✓	25.0	24.7	98.7
cal 4 mdq	4	✓	50.0	51.1	102.2
cal 5 mdq	5	✓	100.0	98.0	98.0
cal 6 mdq	6	✓	250.0	252.5	101.0
cal 7 mdq	7	✓	500.0	498.5	99.7
cal 8 mdq	8	✓	1000.0	1002.5	100.2























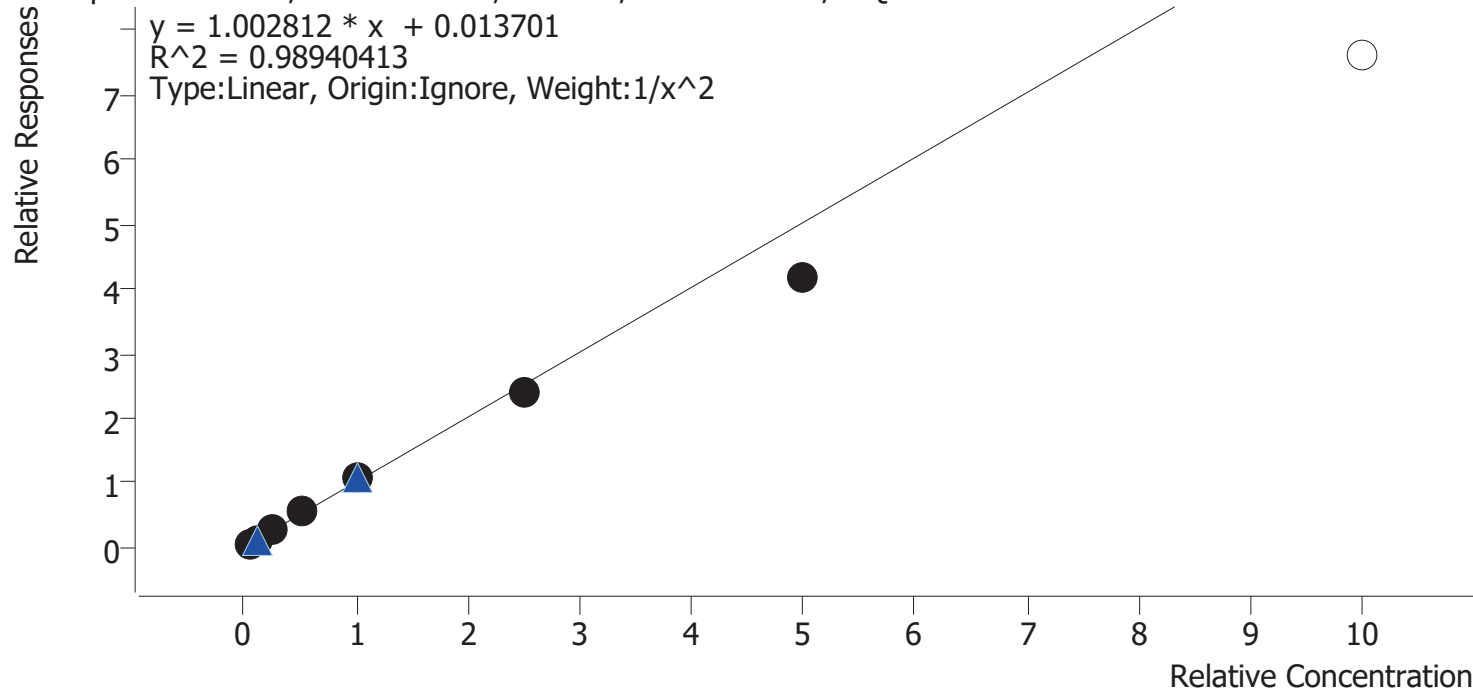


# Compound Calibration Report



**Batch results** D:\MassHunter\Data\2020 Data\am 27-28 6-25-20\QuantResults\mdq.batch.bin  
**Last Cal. Update** 6/29/2020 3:23 PM  
**Analyst Name** ISP\datastor  
**Analyte** Lorazepam **Internal Standard** Oxazepam-D5

Lorazepam - 8 Levels, 7 Levels Used, 8 Points, 7 Points Used, 4 QCs



Sample	Level	Enabled	Expected Concentration	Final Concentration	Accuracy
cal 1 mdq	1	✓	5.0	4.8	96.8
cal 2 mdq	2	✓	10.0	10.2	102.1
cal 3 mdq	3	✓	25.0	26.4	105.7
cal 4 mdq	4	✓	50.0	54.3	108.6
cal 5 mdq	5	✓	100.0	107.3	107.3
cal 6 mdq	6	✓	250.0	239.8	95.9
cal 7 mdq	7	✓	500.0	418.0	83.6
cal 8 mdq	8	×	1000.0	757.1	75.7



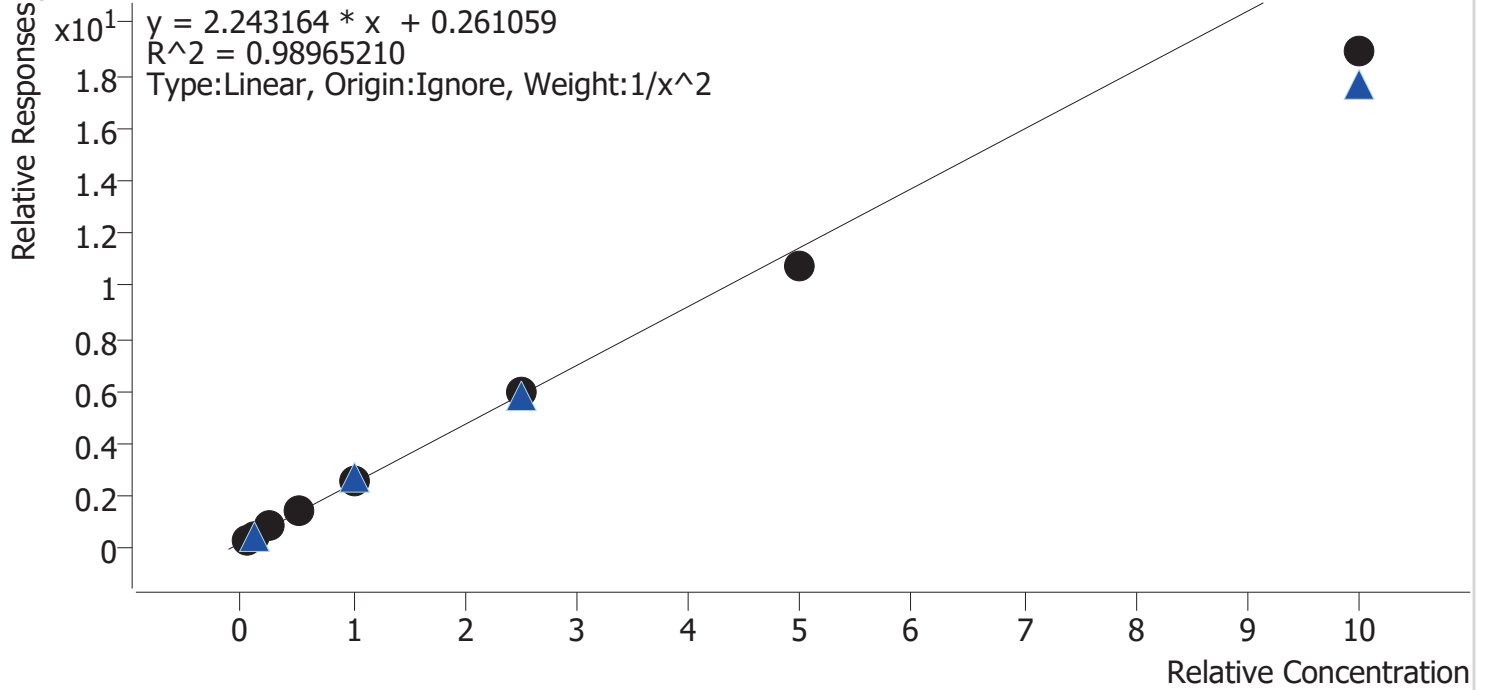


# Compound Calibration Report



**Batch results** D:\MassHunter\Data\2020 Data\lam 27-28 6-25-20\QuantResults\mdq.batch.bin  
**Last Cal. Update** 6/29/2020 3:23 PM  
**Analyst Name** ISP\datastor  
**Analyte** Meprobamate **Internal Standard** Meprobamate-D7

Meprobamate - 8 Levels, 8 Levels Used, 8 Points, 8 Points Used, 4 QCs



Sample	Level	Enabled	Expected Concentration	Final Concentration	Accuracy
cal 1 mdq	1	✓	5.0	4.7	94.0
cal 2 mdq	2	✓	10.0	10.8	108.2
cal 3 mdq	3	✓	25.0	26.1	104.4
cal 4 mdq	4	✓	50.0	53.9	107.8
cal 5 mdq	5	✓	100.0	106.5	106.5
cal 6 mdq	6	✓	250.0	255.4	102.1
cal 7 mdq	7	✓	500.0	468.9	93.8
cal 8 mdq	8	✓	1000.0	831.7	83.2

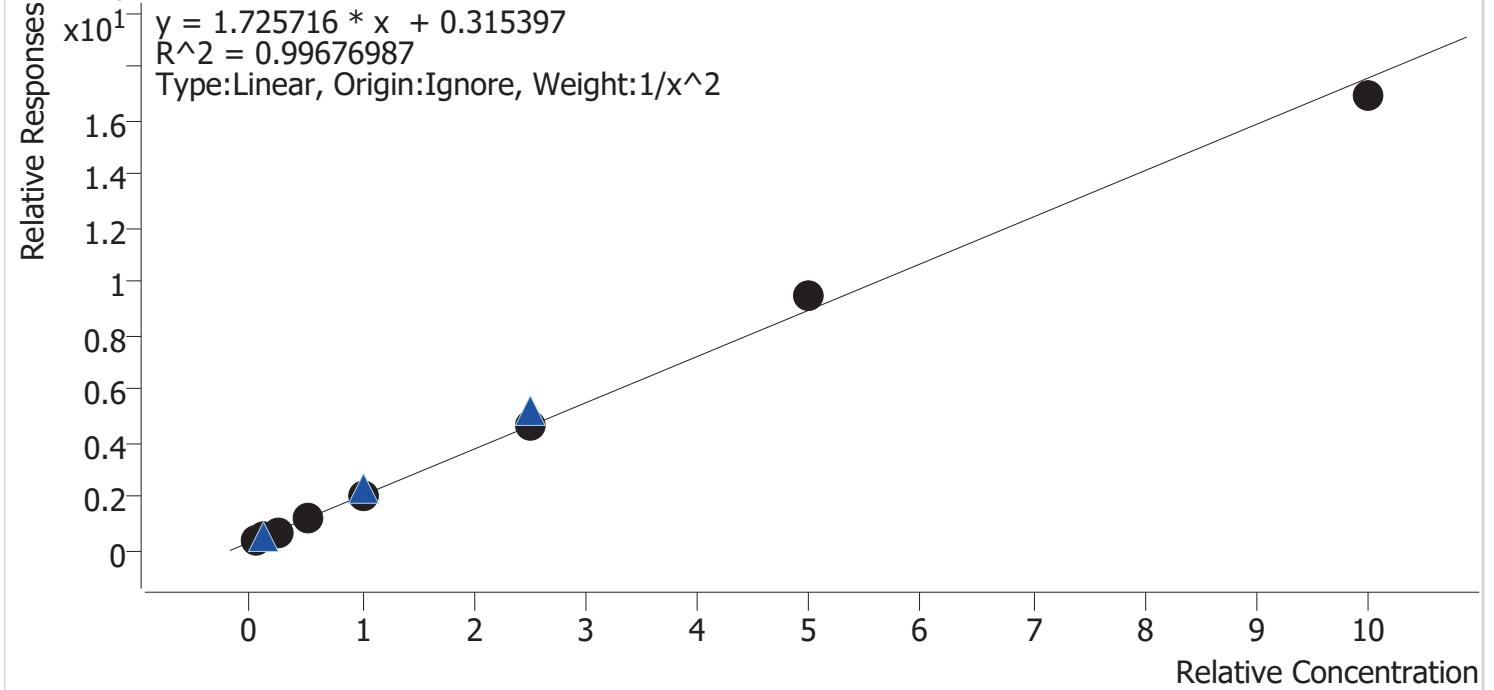


# Compound Calibration Report



<b>Batch results</b>	D:\MassHunter\Data\2020 Data\lam 27-28 6-25-20\QuantResults\mdq.batch.bin		
<b>Last Cal. Update</b>	6/29/2020 3:23 PM		
<b>Analyst Name</b>	ISP\datastor		
<b>Analyte</b>	Methamphetamine	<b>Internal Standard</b>	Methamphetamine-D11

Methamphetamine - 8 Levels, 8 Levels Used, 8 Points, 8 Points Used, 4 QCs



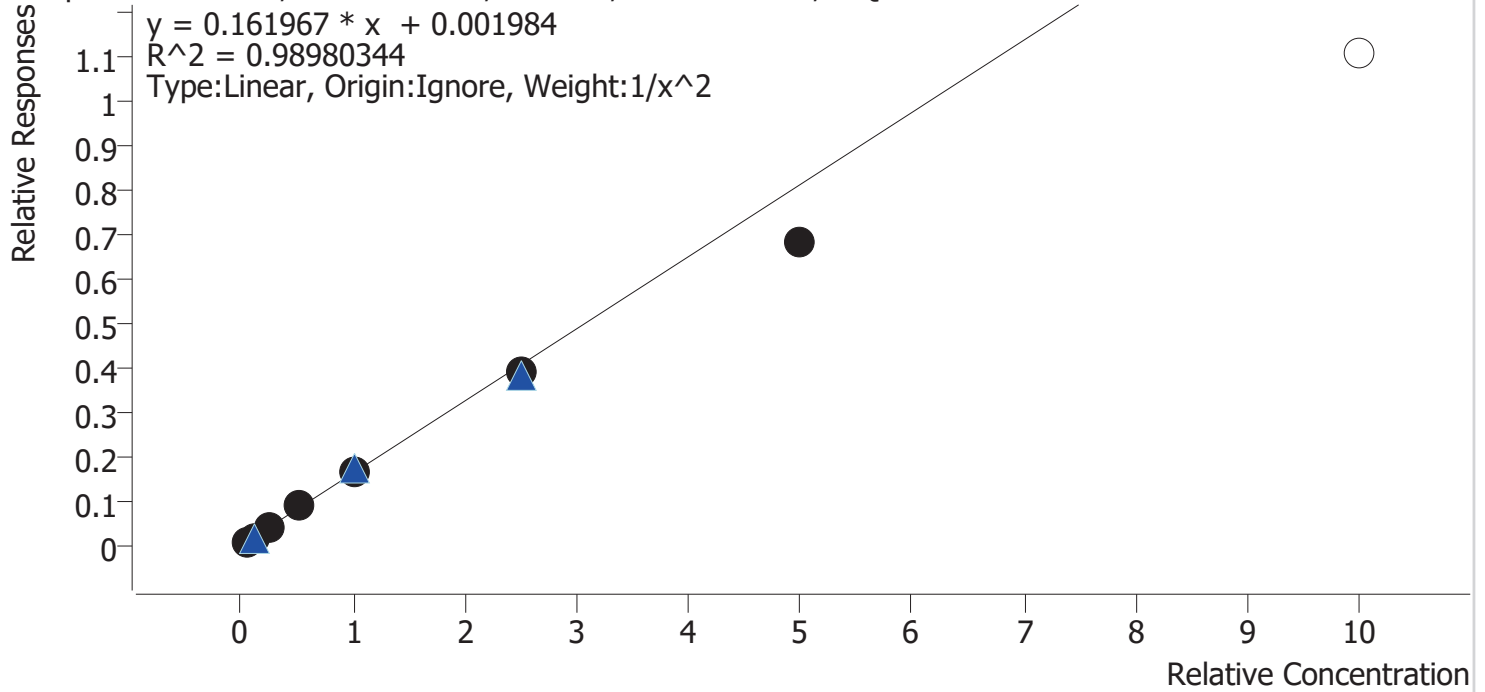
Sample	Level	Enabled	Expected Concentration	Final Concentration	Accuracy
cal 1 mdq	1	✓	5.0	4.9	97.8
cal 2 mdq	2	✓	10.0	10.7	107.4
cal 3 mdq	3	✓	25.0	23.5	94.1
cal 4 mdq	4	✓	50.0	48.0	96.0
cal 5 mdq	5	✓	100.0	100.4	100.4
cal 6 mdq	6	✓	250.0	252.6	101.0
cal 7 mdq	7	✓	500.0	533.9	106.8
cal 8 mdq	8	✓	1000.0	964.4	96.4

# Compound Calibration Report



**Batch results** D:\MassHunter\Data\2020 Data\am 27-28 6-25-20\QuantResults\mdq.batch.bin  
**Last Cal. Update** 6/29/2020 3:23 PM  
**Analyst Name** ISP\datastor  
**Analyte** Metoprolol **Internal Standard** Doxylamine-D5

Metoprolol - 8 Levels, 7 Levels Used, 8 Points, 7 Points Used, 4 QCs



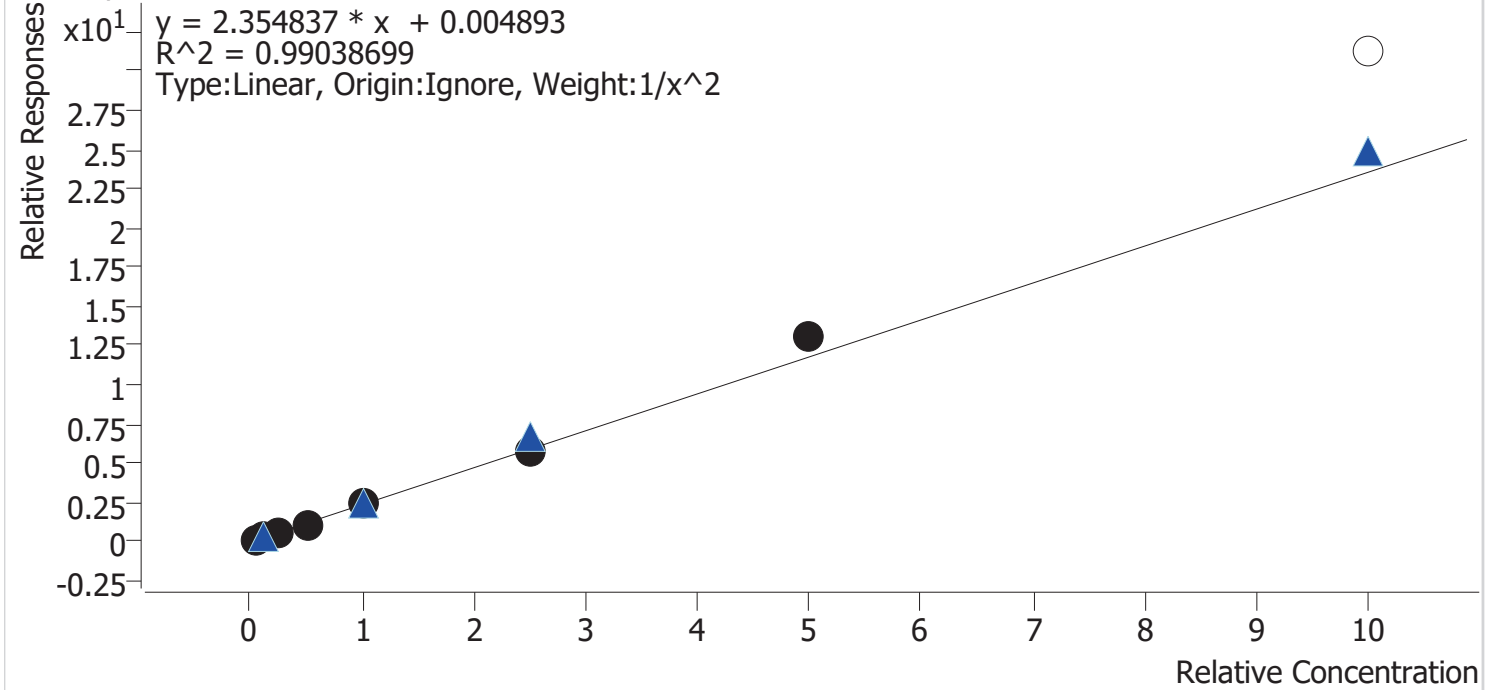
Sample	Level	Enabled	Expected Concentration	Final Concentration	Accuracy
cal 1 mdq	1	✓	5.0	4.8	95.5
cal 2 mdq	2	✓	10.0	10.5	105.4
cal 3 mdq	3	✓	25.0	26.1	104.4
cal 4 mdq	4	✓	50.0	54.9	109.7
cal 5 mdq	5	✓	100.0	104.1	104.1
cal 6 mdq	6	✓	250.0	242.1	96.8
cal 7 mdq	7	✓	500.0	420.7	84.1
cal 8 mdq	8	×	1000.0	681.4	68.1

# Compound Calibration Report



**Batch results** D:\MassHunter\Data\2020 Data\am 27-28 6-25-20\QuantResults\mdq.batch.bin  
**Last Cal. Update** 6/29/2020 3:23 PM  
**Analyst Name** ISP\datastor  
**Analyte** Mirtazapine **Internal Standard** Methadone-D9

Mirtazapine - 8 Levels, 7 Levels Used, 8 Points, 7 Points Used, 4 QCs



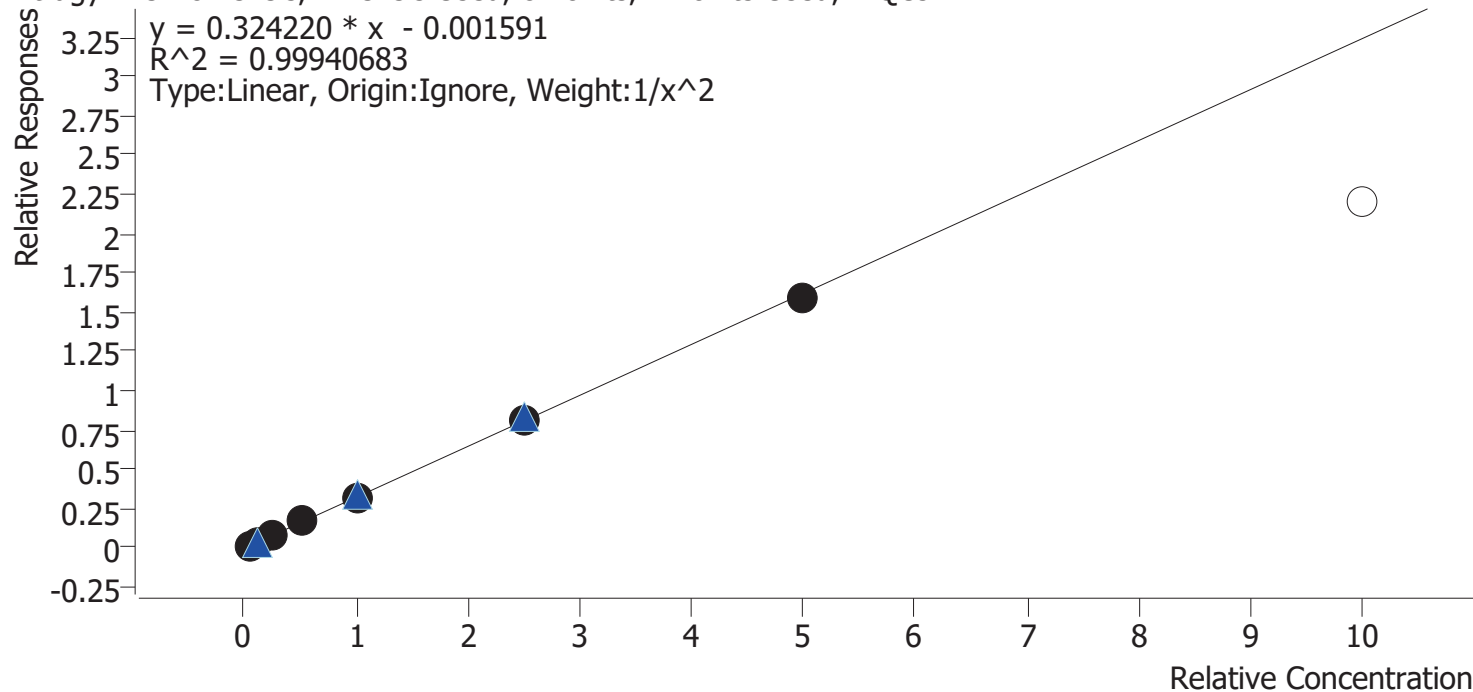
Sample	Level	Enabled	Expected Concentration	Final Concentration	Accuracy
cal 1 mdq	1	✓	5.0	5.0	100.4
cal 2 mdq	2	✓	10.0	10.6	105.6
cal 3 mdq	3	✓	25.0	21.3	85.0
cal 4 mdq	4	✓	50.0	48.0	96.0
cal 5 mdq	5	✓	100.0	102.4	102.4
cal 6 mdq	6	✓	250.0	247.2	98.9
cal 7 mdq	7	✓	500.0	558.8	111.8
cal 8 mdq	8	×	1000.0	1326.7	132.7

# Compound Calibration Report



**Batch results** D:\MassHunter\Data\2020 Data\lam 27-28 6-25-20\QuantResults\mdq.batch.bin  
**Last Cal. Update** 6/29/2020 3:23 PM  
**Analyst Name** ISP\datastor  
**Analyte** Mitragynine **Internal Standard** Methadone-D9

Mitragynine - 8 Levels, 7 Levels Used, 8 Points, 7 Points Used, 4 QCs



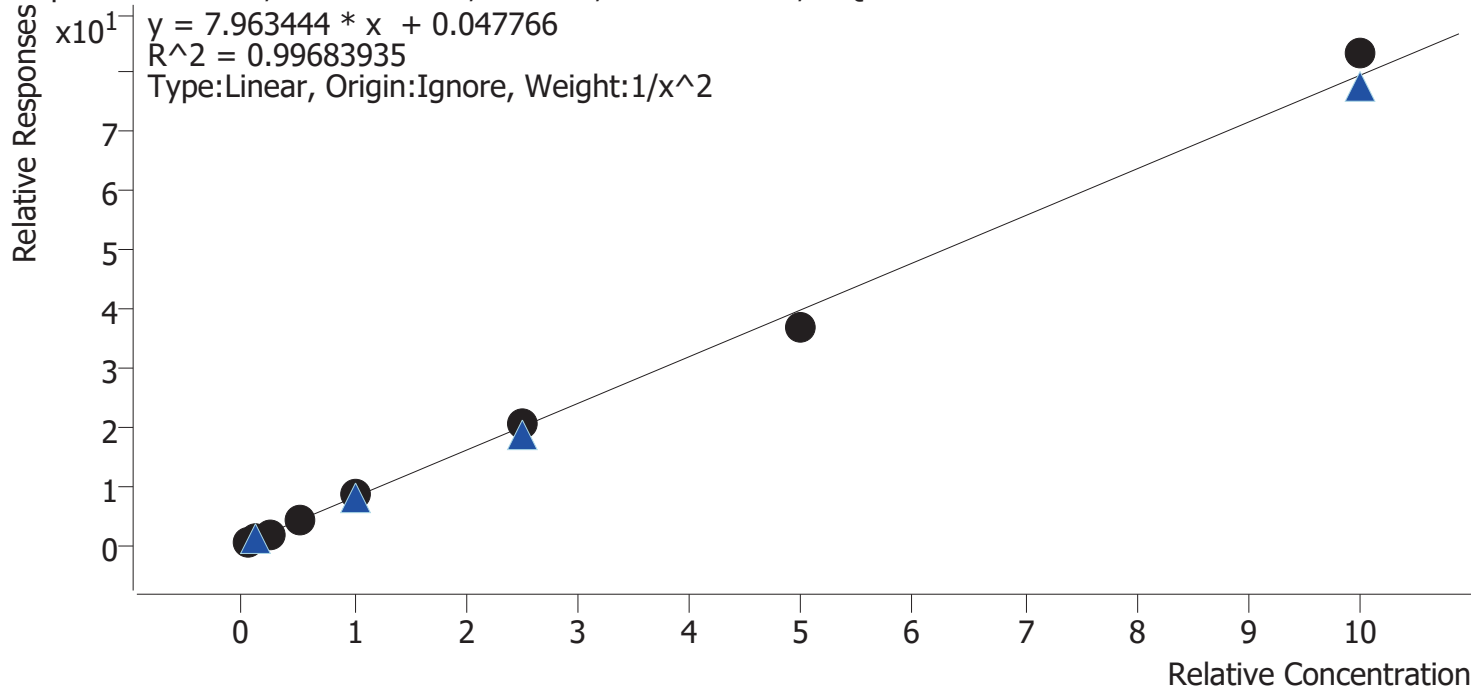
Sample	Level	Enabled	Expected Concentration	Final Concentration	Accuracy
cal 1 mdq	1	✓	5.0	5.0	99.4
cal 2 mdq	2	✓	10.0	10.1	100.7
cal 3 mdq	3	✓	25.0	25.0	100.2
cal 4 mdq	4	✓	50.0	51.8	103.7
cal 5 mdq	5	✓	100.0	97.7	97.7
cal 6 mdq	6	✓	250.0	251.8	100.7
cal 7 mdq	7	✓	500.0	488.3	97.7
cal 8 mdq	8	×	1000.0	677.7	67.8

# Compound Calibration Report



**Batch results** D:\MassHunter\Data\2020 Data\am 27-28 6-25-20\QuantResults\mdq.batch.bin  
**Last Cal. Update** 6/29/2020 3:23 PM  
**Analyst Name** ISP\datastor  
**Analyte** Morphine **Internal Standard** Morphine-D6

Morphine - 8 Levels, 8 Levels Used, 8 Points, 8 Points Used, 4 QCs



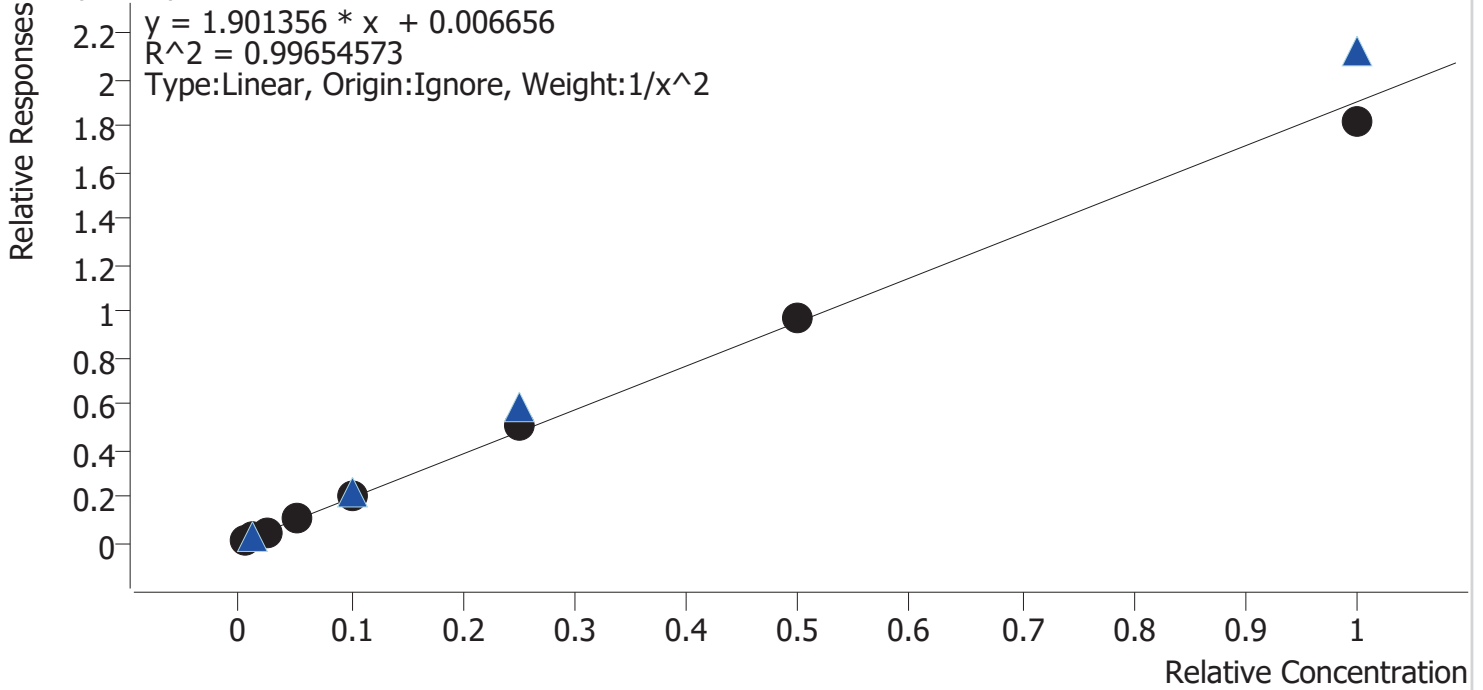
Sample	Level	Enabled	Expected Concentration	Final Concentration	Accuracy
cal 1 mdq	1	✓	5.0	5.1	102.1
cal 2 mdq	2	✓	10.0	9.7	97.5
cal 3 mdq	3	✓	25.0	23.4	93.6
cal 4 mdq	4	✓	50.0	51.4	102.7
cal 5 mdq	5	✓	100.0	103.4	103.4
cal 6 mdq	6	✓	250.0	259.7	103.9
cal 7 mdq	7	✓	500.0	461.3	92.3
cal 8 mdq	8	✓	1000.0	1046.2	104.6

# Compound Calibration Report



**Batch results** D:\MassHunter\Data\2020 Data\am 27-28 6-25-20\QuantResults\mdq.batch.bin  
**Last Cal. Update** 6/29/2020 3:23 PM  
**Analyst Name** ISP\datastor  
**Analyte** Norbuprenorphine **Internal Standard** Norbuprenorphine-D3

Norbuprenorphine - 8 Levels, 8 Levels Used, 8 Points, 8 Points Used, 4 QCs



Sample	Level	Enabled	Expected Concentration	Final Concentration	Accuracy
cal 1 mdq	1	✓	0.5	0.5	104.7
cal 2 mdq	2	✓	1.0	0.9	90.1
cal 3 mdq	3	✓	2.5	2.5	98.9
cal 4 mdq	4	✓	5.0	5.2	103.5
cal 5 mdq	5	✓	10.0	10.1	101.3
cal 6 mdq	6	✓	25.0	26.2	104.8
cal 7 mdq	7	✓	50.0	50.7	101.4
cal 8 mdq	8	✓	100.0	95.3	95.3

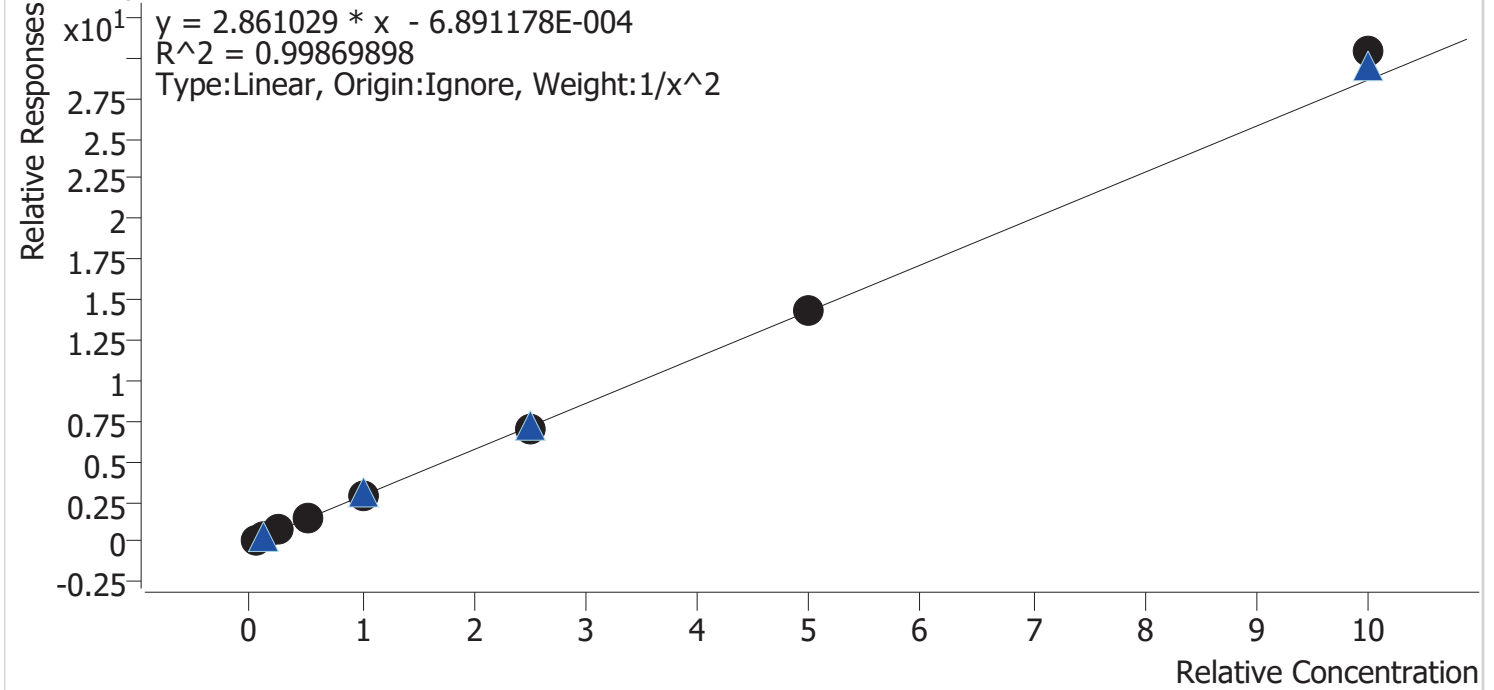


# Compound Calibration Report



**Batch results** D:\MassHunter\Data\2020 Data\am 27-28 6-25-20\QuantResults\mdq.batch.bin  
**Last Cal. Update** 6/29/2020 3:23 PM  
**Analyst Name** ISP\datastor  
**Analyte** Nordiazepam **Internal Standard** Nordiazepam-D5

Nordiazepam - 8 Levels, 8 Levels Used, 8 Points, 8 Points Used, 4 QCs



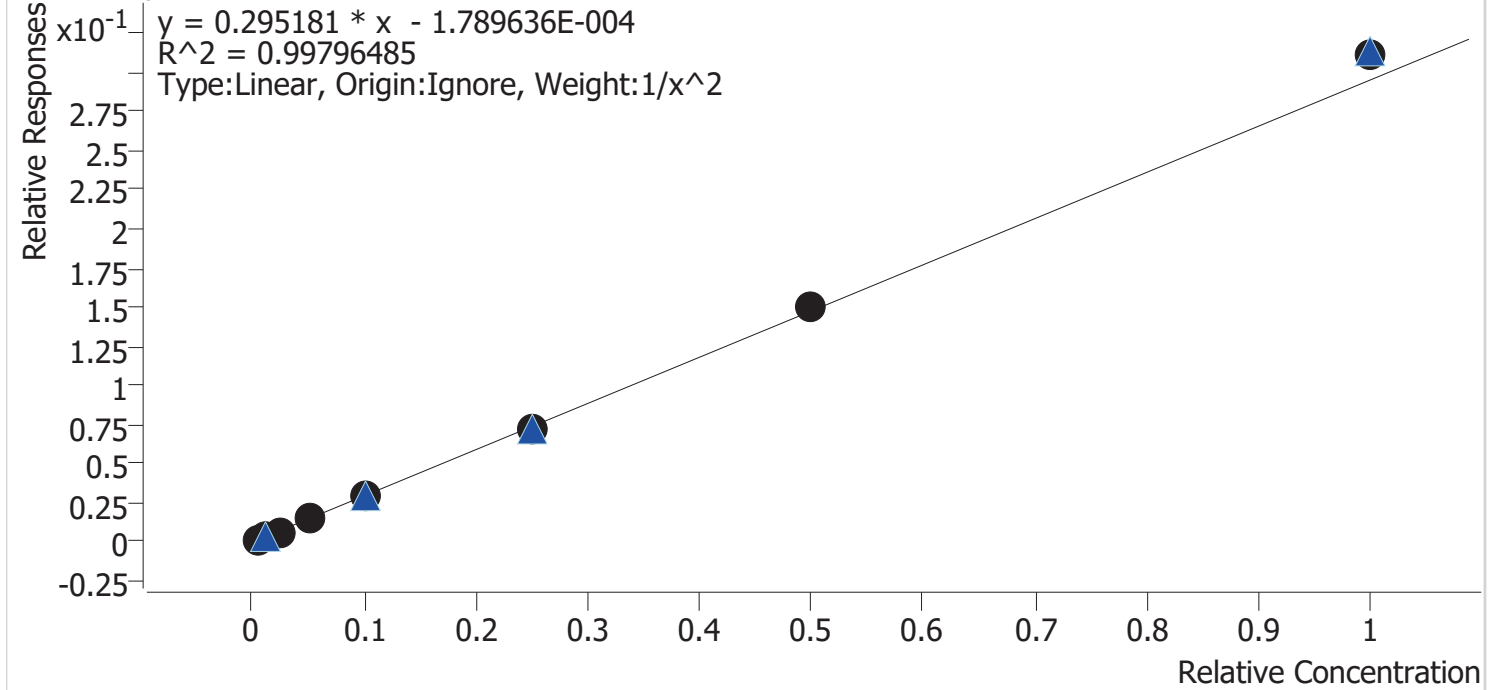
Sample	Level	Enabled	Expected Concentration	Final Concentration	Accuracy
cal 1 mdq	1	✓	5.0	5.1	101.1
cal 2 mdq	2	✓	10.0	10.0	99.7
cal 3 mdq	3	✓	25.0	23.9	95.8
cal 4 mdq	4	✓	50.0	49.4	98.7
cal 5 mdq	5	✓	100.0	101.4	101.4
cal 6 mdq	6	✓	250.0	242.7	97.1
cal 7 mdq	7	✓	500.0	500.3	100.1
cal 8 mdq	8	✓	1000.0	1061.4	106.1

# Compound Calibration Report



**Batch results** D:\MassHunter\Data\2020 Data\lam 27-28 6-25-20\QuantResults\mdq.batch.bin  
**Last Cal. Update** 6/29/2020 3:23 PM  
**Analyst Name** ISP\datastor  
**Analyte** Norfentanyl **Internal Standard** Norfentanyl-D5

Norfentanyl - 8 Levels, 8 Levels Used, 8 Points, 8 Points Used, 4 QCs



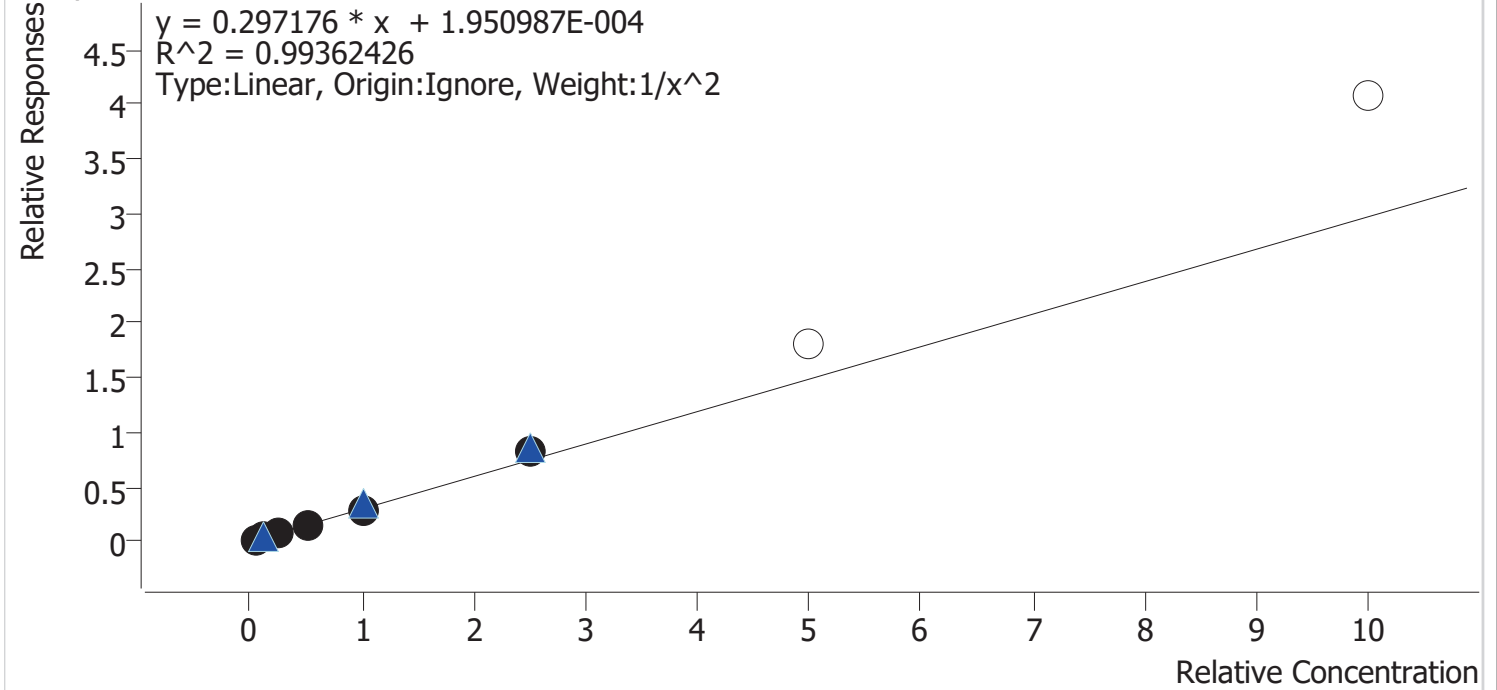
Sample	Level	Enabled	Expected Concentration	Final Concentration	Accuracy
cal 1 mdq	1	✓	0.5	0.5	100.3
cal 2 mdq	2	✓	1.0	1.0	102.6
cal 3 mdq	3	✓	2.5	2.3	92.1
cal 4 mdq	4	✓	5.0	5.0	100.3
cal 5 mdq	5	✓	10.0	9.8	98.0
cal 6 mdq	6	✓	25.0	24.8	99.2
cal 7 mdq	7	✓	50.0	51.0	102.1
cal 8 mdq	8	✓	100.0	105.4	105.4

# Compound Calibration Report



**Batch results** D:\MassHunter\Data\2020 Data\am 27-28 6-25-20\QuantResults\mdq.batch.bin  
**Last Cal. Update** 6/29/2020 3:23 PM  
**Analyst Name** ISP\datastor  
**Analyte** Norhydrocodone **Internal Standard** Norhydrocodone-D3

Norhydrocodone - 8 Levels, 6 Levels Used, 8 Points, 6 Points Used, 4 QCs



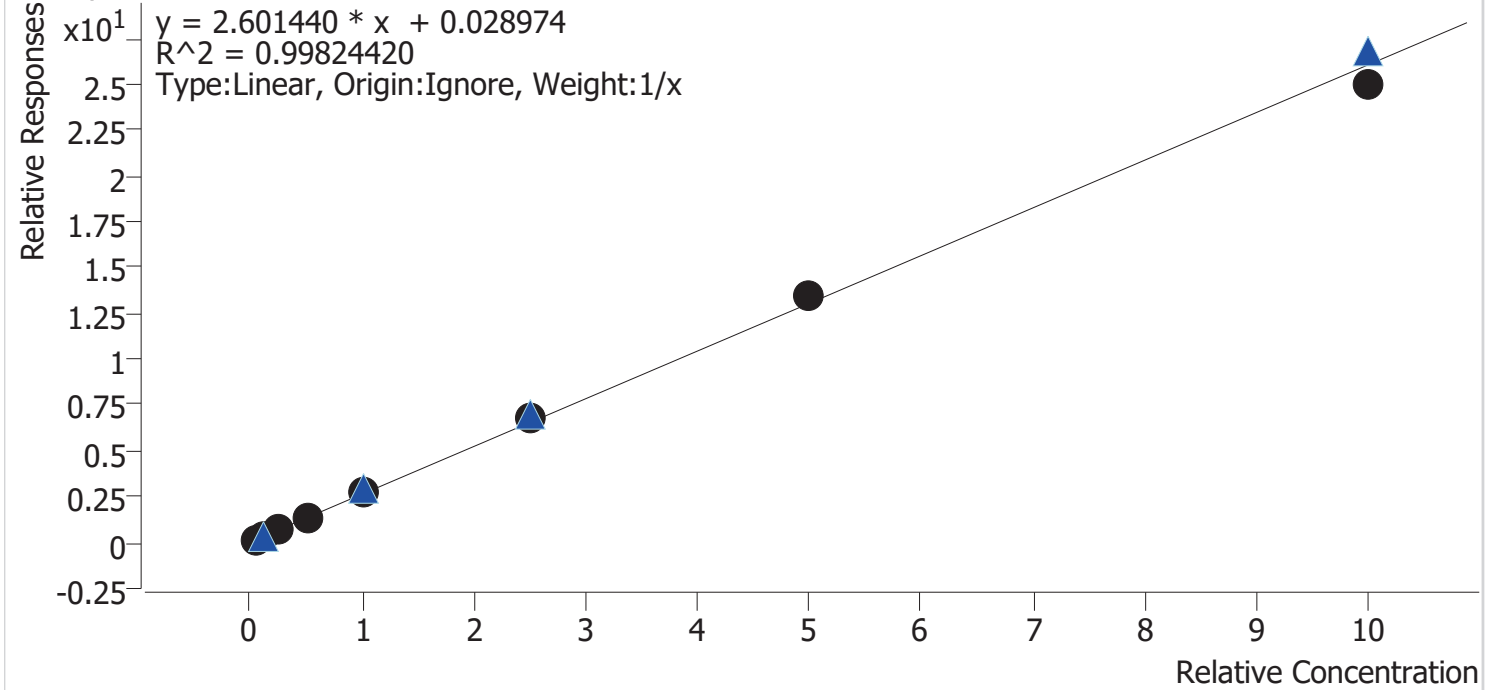
Sample	Level	Enabled	Expected Concentration	Final Concentration	Accuracy
cal 1 mdq	1	✓	5.0	5.2	104.2
cal 2 mdq	2	✓	10.0	9.5	94.6
cal 3 mdq	3	✓	25.0	22.7	91.0
cal 4 mdq	4	✓	50.0	50.5	101.1
cal 5 mdq	5	✓	100.0	100.0	100.0
cal 6 mdq	6	✓	250.0	272.8	109.1
cal 7 mdq	7	×	500.0	604.8	121.0
cal 8 mdq	8	×	1000.0	1376.6	137.7

# Compound Calibration Report



<b>Batch results</b>	D:\MassHunter\Data\2020 Data\am 27-28 6-25-20\QuantResults\mdq.batch.bin		
<b>Last Cal. Update</b>	6/29/2020 3:23 PM		
<b>Analyst Name</b>	ISP\datastor		
<b>Analyte</b>	Noroxycodone	<b>Internal Standard</b>	Noroxycodone-D3

Noroxycodone - 8 Levels, 8 Levels Used, 8 Points, 8 Points Used, 4 QCs

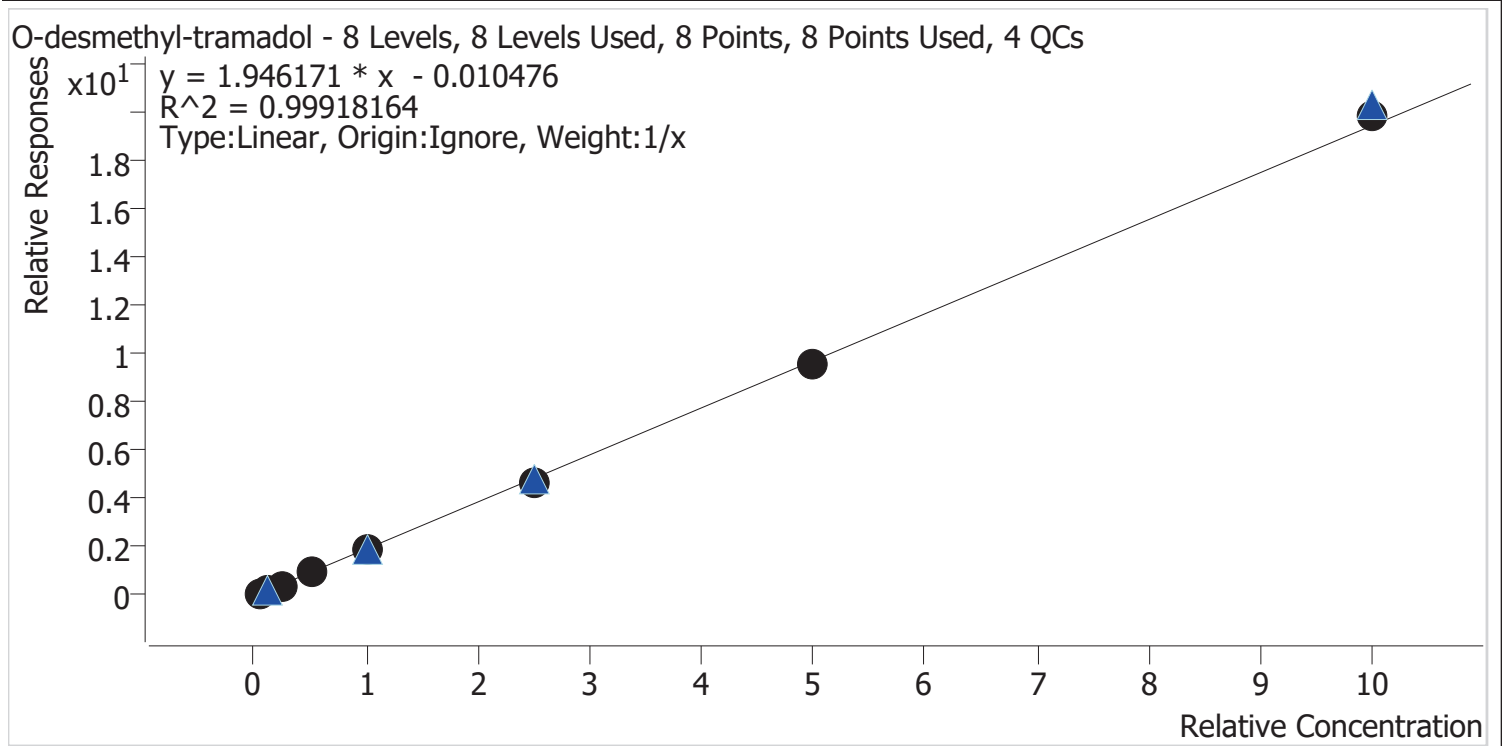


Sample	Level	Enabled	Expected Concentration	Final Concentration	Accuracy
cal 1 mdq	1	✓	5.0	4.4	87.9
cal 2 mdq	2	✓	10.0	9.6	95.7
cal 3 mdq	3	✓	25.0	25.2	100.7
cal 4 mdq	4	✓	50.0	53.1	106.1
cal 5 mdq	5	✓	100.0	105.2	105.2
cal 6 mdq	6	✓	250.0	260.8	104.3
cal 7 mdq	7	✓	500.0	519.0	103.8
cal 8 mdq	8	✓	1000.0	962.9	96.3

# Compound Calibration Report



<b>Batch results</b>	D:\MassHunter\Data\2020 Data\lam 27-28 6-25-20\QuantResults\mdq.batch.bin		
<b>Last Cal. Update</b>	6/29/2020 3:23 PM		
<b>Analyst Name</b>	ISP\datastor		
<b>Analyte</b>	O-desmethyl-tramadol	<b>Internal Standard</b>	O-desmethyl-tramadol-D6



Sample	Level	Enabled	Expected Concentration	Final Concentration	Accuracy
cal 1 mdq	1	✓	5.0	5.6	112.9
cal 2 mdq	2	✓	10.0	10.3	102.6
cal 3 mdq	3	✓	25.0	23.8	95.2
cal 4 mdq	4	✓	50.0	48.4	96.8
cal 5 mdq	5	✓	100.0	95.7	95.7
cal 6 mdq	6	✓	250.0	239.6	95.8
cal 7 mdq	7	✓	500.0	493.4	98.7
cal 8 mdq	8	✓	1000.0	1023.3	102.3



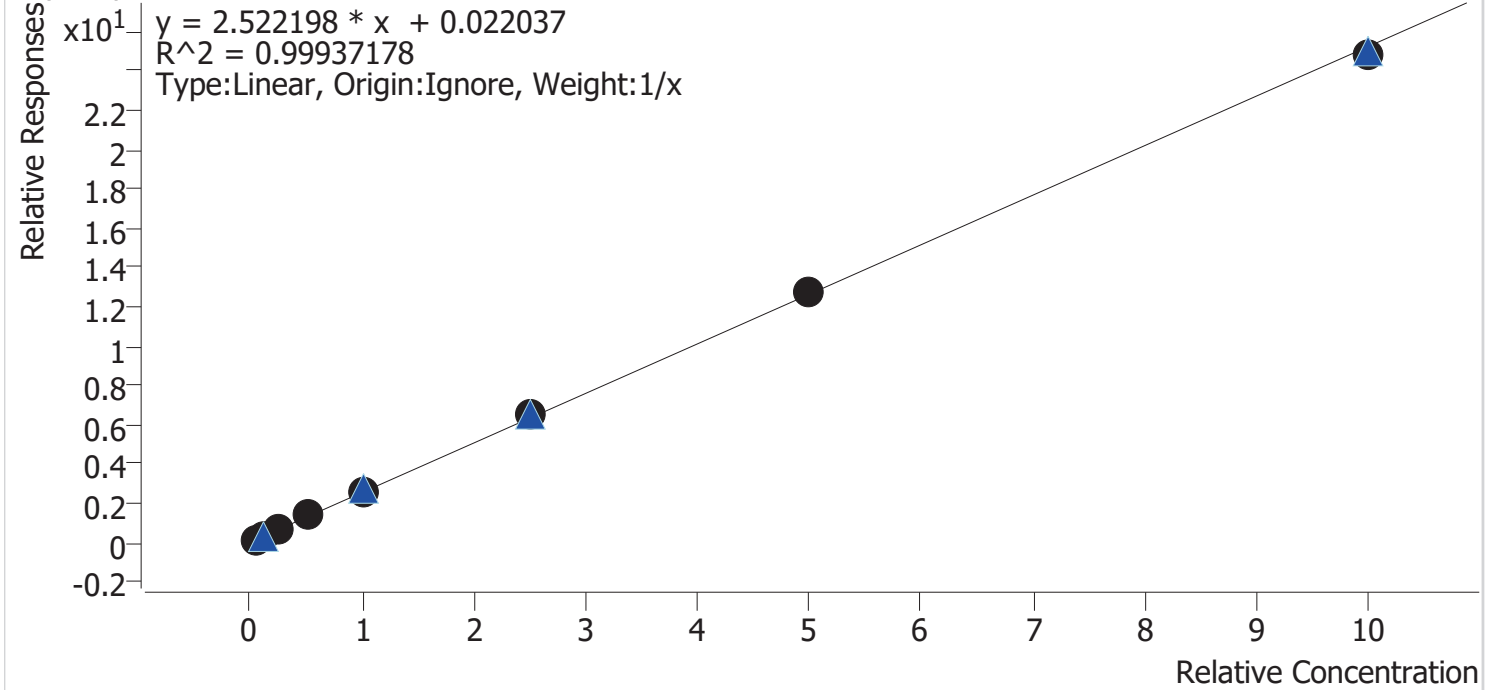


# Compound Calibration Report



**Batch results** D:\MassHunter\Data\2020 Data\lam 27-28 6-25-20\QuantResults\mdq.batch.bin  
**Last Cal. Update** 6/29/2020 3:23 PM  
**Analyst Name** ISP\datastor  
**Analyte** Oxymorphone **Internal Standard** Oxymorphone-D3

Oxymorphone - 8 Levels, 8 Levels Used, 8 Points, 8 Points Used, 4 QCs



Sample	Level	Enabled	Expected Concentration	Final Concentration	Accuracy
cal 1 mdq	1	✓	5.0	4.6	92.1
cal 2 mdq	2	✓	10.0	9.7	96.9
cal 3 mdq	3	✓	25.0	24.9	99.6
cal 4 mdq	4	✓	50.0	52.3	104.6
cal 5 mdq	5	✓	100.0	103.9	103.9
cal 6 mdq	6	✓	250.0	260.4	104.2
cal 7 mdq	7	✓	500.0	503.2	100.6
cal 8 mdq	8	✓	1000.0	981.0	98.1



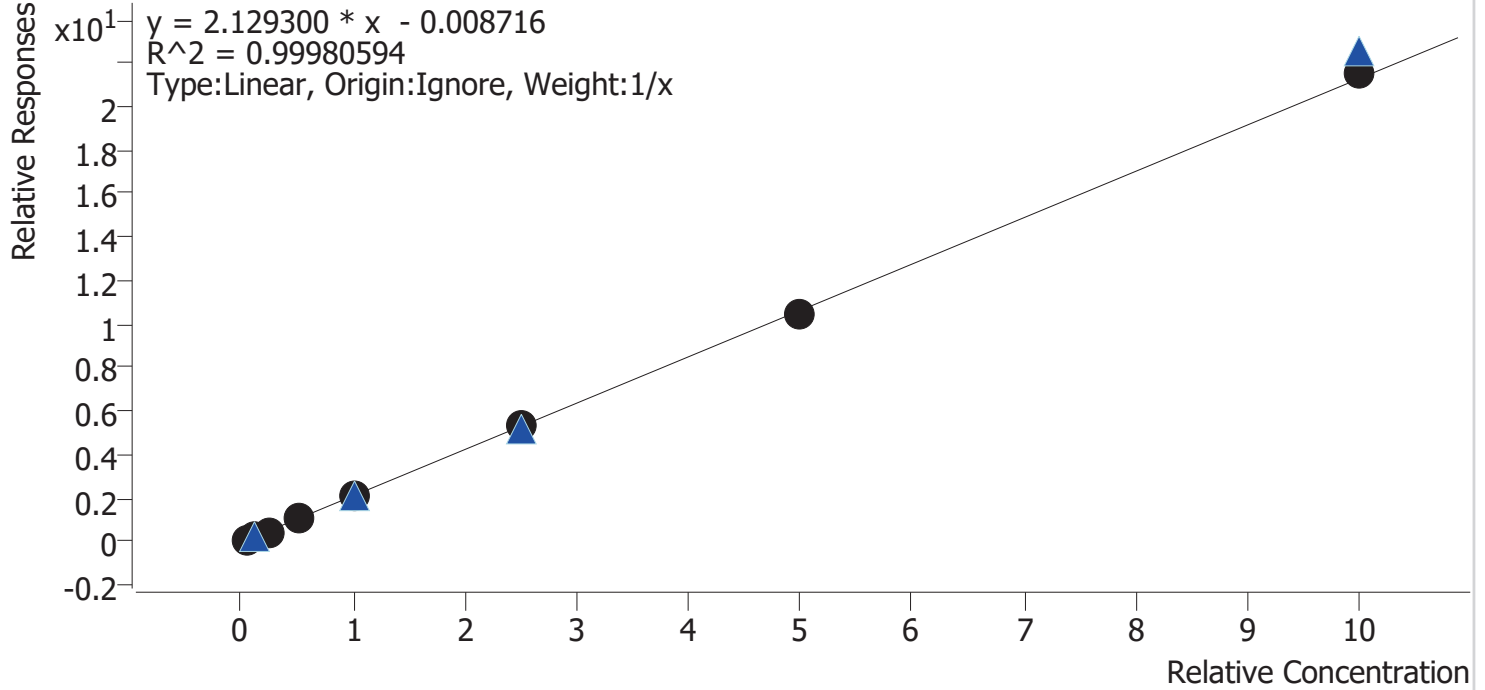


# Compound Calibration Report



**Batch results** D:\MassHunter\Data\2020 Data\lam 27-28 6-25-20\QuantResults\mdq.batch.bin  
**Last Cal. Update** 6/29/2020 3:23 PM  
**Analyst Name** ISP\datastor  
**Analyte** Promethazine **Internal Standard** Promethazine-D3

Promethazine - 8 Levels, 8 Levels Used, 8 Points, 8 Points Used, 4 QCs



Sample	Level	Enabled	Expected Concentration	Final Concentration	Accuracy
cal 1 mdq	1	✓	5.0	5.3	107.0
cal 2 mdq	2	✓	10.0	10.0	100.2
cal 3 mdq	3	✓	25.0	23.9	95.6
cal 4 mdq	4	✓	50.0	50.5	101.0
cal 5 mdq	5	✓	100.0	96.8	96.8
cal 6 mdq	6	✓	250.0	248.7	99.5
cal 7 mdq	7	✓	500.0	494.7	98.9
cal 8 mdq	8	✓	1000.0	1010.0	101.0





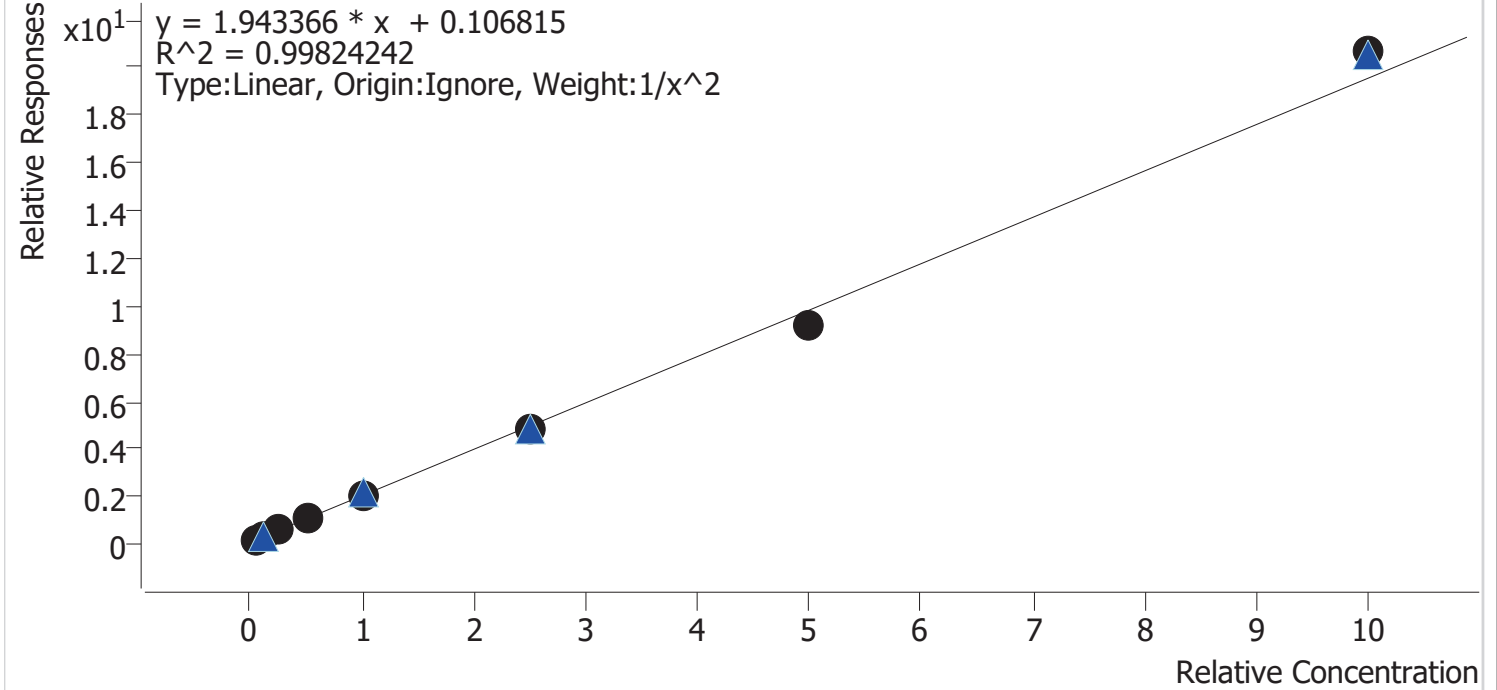


# Compound Calibration Report



<b>Batch results</b>	D:\MassHunter\Data\2020 Data\lam 27-28 6-25-20\QuantResults\mdq.batch.bin		
<b>Last Cal. Update</b>	6/29/2020 3:23 PM		
<b>Analyst Name</b>	ISP\datastor		
<b>Analyte</b>	Tramadol	<b>Internal Standard</b>	Tramadol-13C-D3

Tramadol - 8 Levels, 8 Levels Used, 8 Points, 8 Points Used, 4 QCs



Sample	Level	Enabled	Expected Concentration	Final Concentration	Accuracy
cal 1 mdq	1	✓	5.0	4.9	98.7
cal 2 mdq	2	✓	10.0	10.3	102.9
cal 3 mdq	3	✓	25.0	24.6	98.6
cal 4 mdq	4	✓	50.0	50.9	101.7
cal 5 mdq	5	✓	100.0	101.0	101.0
cal 6 mdq	6	✓	250.0	244.1	97.6
cal 7 mdq	7	✓	500.0	469.0	93.8
cal 8 mdq	8	✓	1000.0	1057.3	105.7







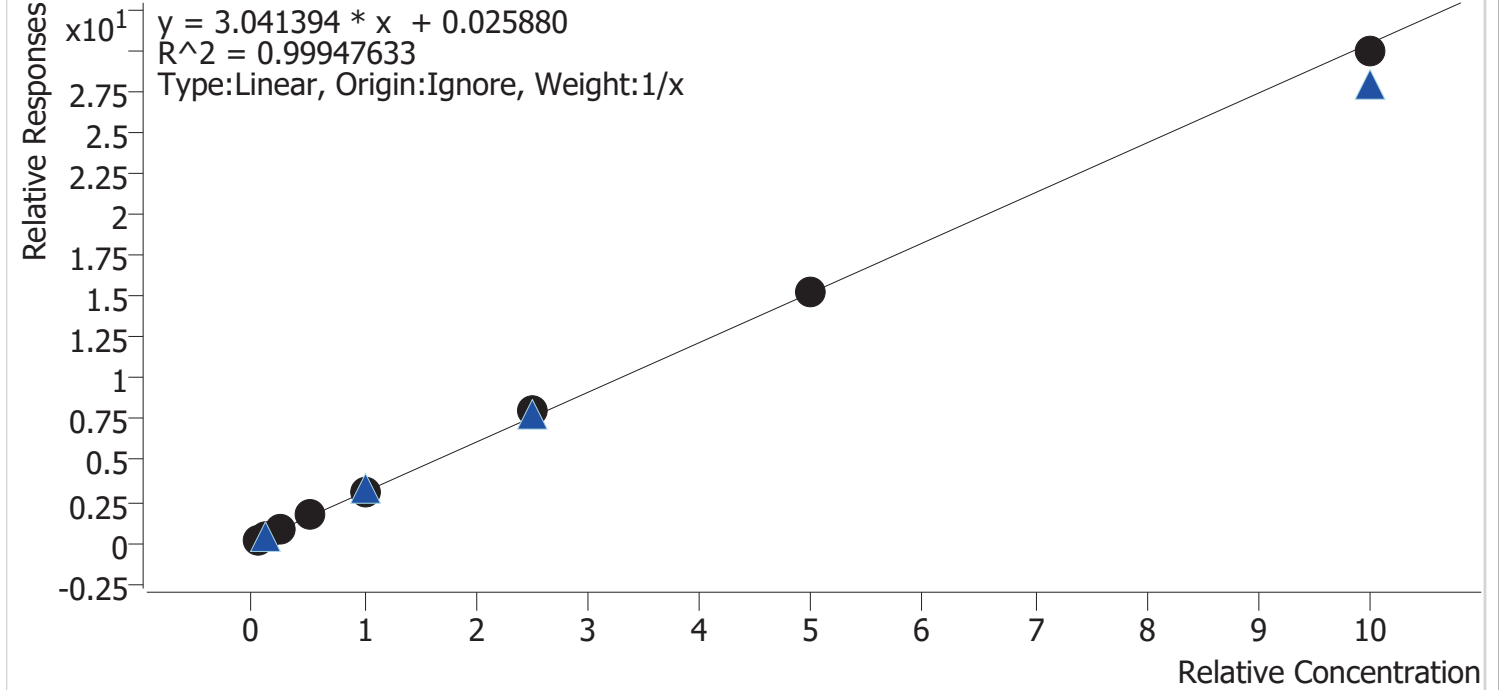


# Compound Calibration Report



**Batch results** D:\MassHunter\Data\2020 Data\lam 27-28 6-25-20\QuantResults\mdq.batch.bin  
**Last Cal. Update** 6/29/2020 3:23 PM  
**Analyst Name** ISP\datastor  
**Analyte** MDA **Internal Standard** MDA-D5

MDA - 8 Levels, 8 Levels Used, 8 Points, 8 Points Used, 4 QCs



Sample	Level	Enabled	Expected Concentration	Final Concentration	Accuracy
cal 1 mdq	1	✓	5.0	4.6	92.2
cal 2 mdq	2	✓	10.0	9.8	97.8
cal 3 mdq	3	✓	25.0	25.1	100.5
cal 4 mdq	4	✓	50.0	52.7	105.4
cal 5 mdq	5	✓	100.0	101.0	101.0
cal 6 mdq	6	✓	250.0	260.5	104.2
cal 7 mdq	7	✓	500.0	502.9	100.6
cal 8 mdq	8	✓	1000.0	983.4	98.3



A

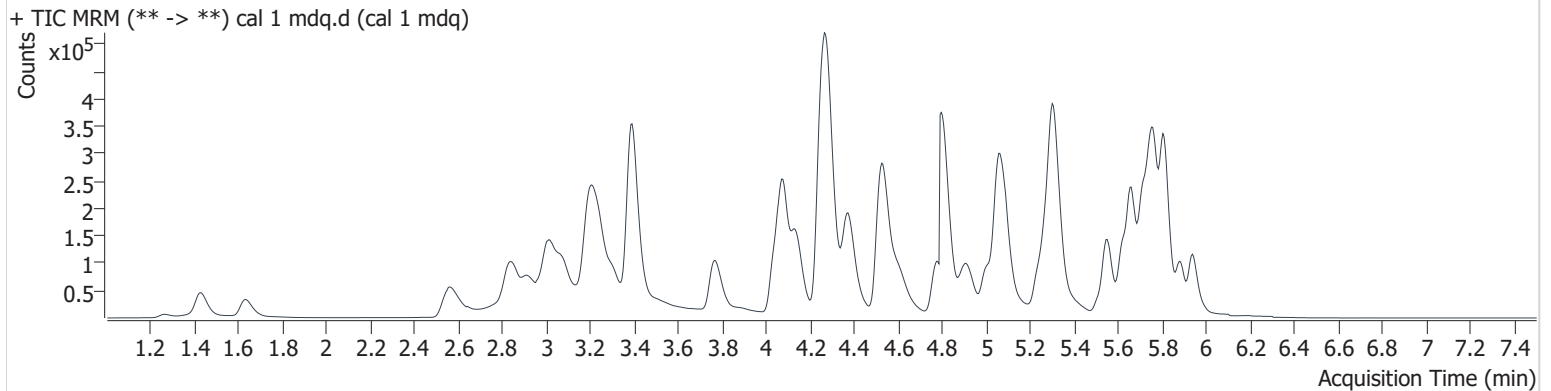
# AM #28 Multi-Drug Quant. Results

**Batch results** D:\MassHunter\Data\2020 Data\am 27-28 6-25-20\QuantResults\mdq.batch.bin  
**Calibration Last Update** 6/29/2020 3:23:50 PM

<b>Instrument</b>	69679	<b>Data File</b>	cal 1 mdq.d
<b>Type</b>	Cal	<b>Sample</b>	cal 1 mdq
<b>Acq. Method</b>	MDQP1 5-27-20.m	<b>Operator</b>	Anne Nord
<b>Sample Position</b>	P2-A5	<b>Comment</b>	
<b>Injection Volume</b>	2		
<b>Acq. Date-Time</b>	6/25/2020 5:38:03 PM		

**Sample Info.**

## Sample Chromatogram



Name	RT	Resp.	S/N	Ratio	S/N	ISTD Resp.	Final Conc.
6-MAM	3.156	1082	2395.4	84.3	369.2	48233	0.506 ng/ml
7-aminoclonazepam	4.272	24400	1862.7	93.1	1498.0	194123	4.823 ng/ml
a-hydroxyalprazolam	5.697	5891	1044.1	59.9	6514.6	68940	4.812 ng/ml
alpha-PVP	4.382	62022	1873.2	49.6	96.8	508070	5.260 ng/ml
Alprazolam	5.771	32839	16696.1	117.5	2136.4	264458	5.789 ng/ml
Amphetamine	3.079	94563	733.1	51.2	434.8	297870	5.026 ng/ml
Benzoylcegonine	3.905	1795	33.2	7.0	11.8	9653	5.091 ng/ml
Buprenorphine	5.650	409	25.2	19.4	154.3	31756	0.492 ng/ml
Bupropion	4.791	49530	1348.4	63.6	403.5	339145	4.954 ng/ml
Carisoprodol	5.721	32401	698.2	71.4	303.0	304282	4.753 ng/ml
Citalopram	5.235	31260	467.7	40.1	293.4	259994	5.523 ng/ml
Clonazepam	5.615	32872	1190.3	33.0	7717.2	104096	3.726 ng/ml
Cocaine	4.281	53125	637.8	44.1	1632.2	773712	5.238 ng/ml
Codeine	2.604	6236	10357.1	119.2	1892.6	65136	5.140 ng/ml
Cyclobenzaprine	5.627	26266	37315.5	9.3	19.6	172409	5.147 ng/ml
Dextromethorphan	5.289	21427	793.1	82.2	1251.6	185288	5.002 ng/ml
Dextrorphan	4.136	17204	45130.2	210.8	2099.2	380231	5.164 ng/ml
Diazepam	5.942	27095	1020.6	84.1	1603.7	248893	4.901 ng/ml
Dihydrocodeine	2.587	16126	432.7	61.8	751.3	181428	4.836 ng/ml
Diphenhydramine	5.311	98973	3802.7	28.9	1463.8	947558	5.371 ng/ml
Doxylamine	4.538	134457	1795.5	100.8	2458.4	1100236	5.062 ng/ml
EDDP	5.279	14740	356.8	238.3	1374.2	325454	5.087 ng/ml
Fentanyl	5.084	2895	68.5	75.8	2465.3	236951	0.639 ng/ml
Fluoxetine	5.709	29449	1899.9	7.5	2432.3	192902	4.529 ng/ml
Hydrocodone	3.041	25658	900.5	33.6	2774.2	279215	4.208 ng/ml
Hydromorphone	1.637	16260	313.7	73.2	1047.7	105584	5.409 ng/ml
Ketamine	4.056	47784	4093.0	36.1	197.6	404453	4.986 ng/ml
Lamotrigine	4.294	3896	378.1	90.3	4739.1	422666	4.790 ng/ml
Lorazepam	5.744	31200	330.9	50.5	122.1	501237	4.841 ng/ml
MDA	3.221	70190	219.2	21.8	216.6	422666	4.609 ng/ml
MDMA	3.313	41110	27519.0	87.2	369.3	80404	4.626 ng/ml
Meprobamate	4.920	74296	6738.4	30.2	682.0	202708	4.701 ng/ml
Methadone	5.662	52238	1200.8	56.4	1623.5	490691	5.312 ng/ml

# AM #28 Multi-Drug Quant. Results

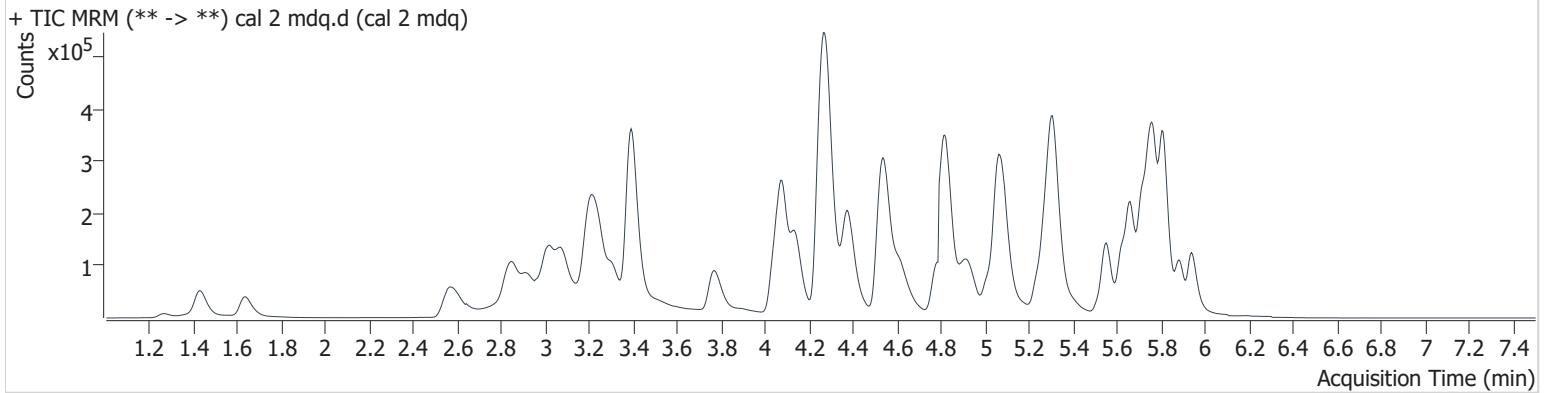
Name	RT	Resp.	S/N	Ratio	S/N	ISTD Resp.	Final Conc.
Methamphetamine	3.247	168318	388.0	40.5	∞	421043	4.889 ng/ml
Metoprolol	4.344	10689	855.0	95.6	600.9	1100236	4.773 ng/ml
Mirtazapine	4.610	60403	1247.8	50.4	3327.0	490691	5.020 ng/ml
Mitragynine	5.224	7125	7509.1	33.3	2017.2	490691	4.969 ng/ml
Morphine	1.266	2572	691.3	21.8	355.5	5663	5.104 ng/ml
Norbuprenorphine	5.012	100	207.1	91.0	222.2	6009	0.523 ng/ml
Nordiazepam	5.886	26033	55224.7	61.0	2077.5	180934	5.053 ng/ml
Norfentanyl	4.107	961	21.3	333.9	32.5	738398	0.502 ng/ml
Norhydrocodone	3.092	1364	1295.5	19.2	86.4	86985	5.211 ng/ml
Noroxycodone	2.938	21387	253.7	34.5	1087.7	149280	4.394 ng/ml
O-desmethyl-tramadol	3.394	111385	2363.2	5.9	419.1	1120729	5.645 ng/ml
Oxazepam	5.751	45395	1521.4	74.7	706.4	501237	4.515 ng/ml
Oxycodone	2.860	53425	1124.4	27.5	6207.5	431427	4.751 ng/ml
Oxymorphone	1.429	24899	961.9	44.6	6146.7	180168	4.605 ng/ml
Phentermine	3.795	12156	32.9	9.1	17.0	364207	5.215 ng/ml
Promethazine	5.549	36915	5292.9	33.9	697.6	350998	5.349 ng/ml
Quetiapine	5.520	31624	36162.2	51.6	12876.2	72323	4.851 ng/ml
Sertraline	5.776	13002	537.6	100.9	16084.4	102070	4.993 ng/ml
Temazepam	5.813	77334	2743.7	31.4	97.1	700719	5.104 ng/ml
Tramadol	4.262	230640	8965.3	2.9	12.8	1137741	4.935 ng/ml
Trazodone	5.038	39897	3990.2	74.7	380.8	333394	4.805 ng/ml
Venlafaxine	5.061	78269	2833.4	39.9	561.8	878673	5.619 ng/ml
Zolpidem	4.819	109558	2157.4	31.8	775.7	713825	5.235 ng/ml

# AM #28 Multi-Drug Quant. Results

**Batch results** D:\MassHunter\Data\2020 Data\am 27-28 6-25-20\QuantResults\mdq.batch.bin  
**Calibration Last Update** 6/29/2020 3:23:50 PM

<b>Instrument</b>	69679	<b>Data File</b>	cal 2 mdq.d
<b>Type</b>	Cal	<b>Sample</b>	cal 2 mdq
<b>Acq. Method</b>	MDQP1 5-27-20.m	<b>Operator</b>	Anne Nord
<b>Sample Position</b>	P2-B5	<b>Comment</b>	
<b>Injection Volume</b>	2		
<b>Acq. Date-Time</b>	6/25/2020 5:48:53 PM		

## Sample Chromatogram



Name	RT	Resp.	S/N	Ratio	S/N	ISTD Resp.	Final Conc.
6-MAM	3.156	1937	897.9	93.4	3100.5	46629	0.961 ng/ml
7-aminoclonazepam	4.277	46954	8371.1	91.7	1614.3	189128	10.257 ng/ml
a-hydroxyalprazolam	5.697	11664	403.6	54.0	2714.3	64886	10.565 ng/ml
alpha-PVP	4.382	112487	3904.1	51.1	1146.2	474006	9.992 ng/ml
Alprazolam	5.771	62344	9646.1	114.7	4026.6	256396	10.114 ng/ml
Amphetamine	3.079	150608	1842.0	53.6	887.5	258176	9.824 ng/ml
Benzoylcegonine	3.894	3585	398.4	8.1	53.6	9295	10.330 ng/ml
Buprenorphine	5.655	669	60.6	13.9	204.6	24892	1.020 ng/ml
Bupropion	4.796	85451	2616.4	62.7	682.8	299290	10.033 ng/ml
Carisoprodol	5.721	59562	3442.1	68.3	267.7	289656	9.935 ng/ml
Citalopram	5.240	44598	147.7	42.4	27540.5	208038	9.713 ng/ml
Clonazepam	5.615	64062	3604.1	30.5	12596.4	97786	9.907 ng/ml
Cocaine	4.281	95963	4703.7	45.2	2494.7	730016	9.973 ng/ml
Codeine	2.614	11734	1485.5	119.3	677.9	65522	9.695 ng/ml
Cyclobenzaprine	5.632	40692	31429.9	9.5	194.8	138388	10.219 ng/ml
Dextromethorphan	5.284	34204	1098.1	79.9	3215.3	159443	10.017 ng/ml
Dextrorphan	4.136	29557	63398.9	223.2	23358.0	354645	9.615 ng/ml
Diazepam	5.942	49656	1798.1	88.1	1874.4	233581	9.888 ng/ml
Dihydrocodeine	2.587	33147	4486.9	56.7	2517.8	175642	10.459 ng/ml
Diphenhydramine	5.311	155041	3835.9	28.9	6807.2	783856	10.100 ng/ml
Doxylamine	4.543	250763	4757.9	100.7	43060.8	1048862	9.913 ng/ml
EDDP	5.279	35097	620.2	242.9	5833.9	412502	9.731 ng/ml
Fentanyl	5.100	4067	94.6	87.5	4178.2	195980	1.025 ng/ml
Fluoxetine	5.709	46267	1343.7	7.0	2306.9	162956	9.765 ng/ml
Hydrocodone	3.046	48124	791.9	36.4	58.1	270199	9.587 ng/ml
Hydromorphone	1.642	33890	620.8	78.5	3120.4	105524	10.539 ng/ml
Ketamine	4.056	88197	3637.8	37.7	157.6	387434	9.971 ng/ml
Lamotrigine	4.304	7734	1026.0	89.6	9853.3	387924	11.065 ng/ml
Lorazepam	5.749	53456	1392.0	51.3	234.8	460300	10.214 ng/ml
MDA	3.221	125444	572.6	21.5	241.5	387924	9.781 ng/ml
MDMA	3.313	73242	289.5	87.1	1122.1	73738	9.792 ng/ml
Meprobamate	4.925	100090	6243.9	30.6	749.0	198712	10.817 ng/ml
Methadone	5.662	80563	2049.9	56.7	1414.8	390655	10.279 ng/ml

# AM #28 Multi-Drug Quant. Results

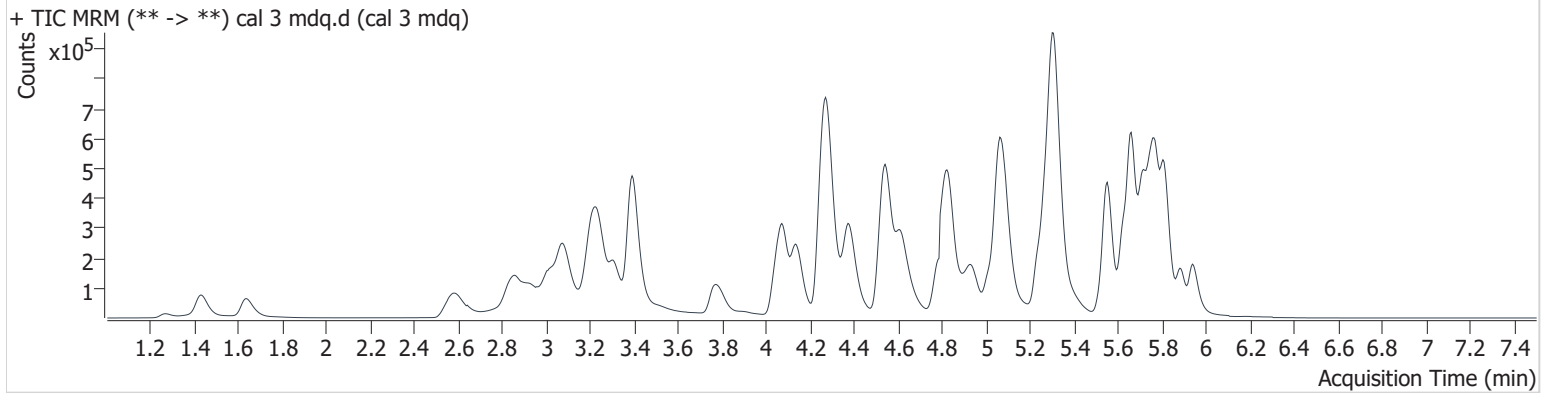
Name	RT	Resp.	S/N	Ratio	S/N	ISTD Resp.	Final Conc.
Methamphetamine	3.252	162591	558.2	40.0	117.6	324674	10.742 ng/ml
Metoprolol	4.344	19993	35401.1	93.4	1361.2	1048862	10.544 ng/ml
Mirtazapine	4.615	99027	1891.4	49.5	1588.9	390655	10.557 ng/ml
Mitragynine	5.224	12129	15686.5	31.0	4180.4	390655	10.067 ng/ml
Morphine	1.266	4657	2284.2	22.1	36.6	5651	9.748 ng/ml
Norbuprenorphine	5.012	119	176.0	97.6	119.9	4990	0.901 ng/ml
Nordiazepam	5.886	47870	71354.7	58.6	22291.7	168177	9.973 ng/ml
Norfentanyl	4.096	2088	162.5	286.0	246.1	732719	1.026 ng/ml
Norhydrocodone	3.102	2462	251.8	16.1	74.8	86974	9.458 ng/ml
Noroxycodone	2.943	40488	566.4	34.7	796.8	145664	9.571 ng/ml
O-desmethyl-tramadol	3.394	202856	7027.8	6.1	626.3	1072262	10.259 ng/ml
Oxazepam	5.756	79348	294.4	76.3	455.4	460300	9.444 ng/ml
Oxycodone	2.865	97821	159.2	27.7	721.0	418741	9.813 ng/ml
Oxymorphone	1.429	47973	599.9	44.1	2842.5	180079	9.688 ng/ml
Phentermine	3.800	18682	24.5	9.8	52.7	302923	9.356 ng/ml
Promethazine	5.554	59686	8581.8	35.4	283.2	291741	10.017 ng/ml
Quetiapine	5.525	53347	9914.5	51.7	3691.4	61543	10.569 ng/ml
Sertraline	5.776	20056	699.0	107.3	42818.7	84358	9.939 ng/ml
Temazepam	5.813	139706	3820.3	32.3	321.2	661867	9.727 ng/ml
Tramadol	4.262	337396	10225.7	3.2	134.2	1099723	10.291 ng/ml
Trazodone	5.053	68102	2251.2	74.0	1191.7	280809	10.556 ng/ml
Venlafaxine	5.061	140883	604.5	39.8	993.2	813929	10.276 ng/ml
Zolpidem	4.834	206077	2121.8	34.6	3224.4	859100	9.016 ng/ml

# AM #28 Multi-Drug Quant. Results

**Batch results** D:\MassHunter\Data\2020 Data\am 27-28 6-25-20\QuantResults\mdq.batch.bin  
**Calibration Last Update** 6/29/2020 3:23:50 PM

<b>Instrument</b>	69679	<b>Data File</b>	cal 3 mdq.d
<b>Type</b>	Cal	<b>Sample</b>	cal 3 mdq
<b>Acq. Method</b>	MDQP1 5-27-20.m	<b>Operator</b>	Anne Nord
<b>Sample Position</b>	P2-C5	<b>Comment</b>	
<b>Injection Volume</b>	2		
<b>Acq. Date-Time</b>	6/25/2020 5:59:40 PM		

## Sample Chromatogram



Name	RT	Resp.	S/N	Ratio	S/N	ISTD Resp.	Final Conc.
6-MAM	3.151	5360	11818.1	81.0	6786.2	49350	2.557 ng/ml
7-aminoclonazepam	4.272	114544	5315.2	91.3	4825.4	186582	26.468 ng/ml
a-hydroxyalprazolam	5.697	26707	1708.0	59.2	900.7	64083	25.023 ng/ml
alpha-PVP	4.382	314069	7731.1	50.1	2176.4	538444	24.199 ng/ml
Alprazolam	5.771	149554	3249.6	117.4	4752.3	239805	23.946 ng/ml
Amphetamine	3.079	435028	5546.5	50.3	1067.9	305392	25.001 ng/ml
Benzoylcegonine	3.905	8070	826.5	7.5	258.3	10205	20.954 ng/ml
Buprenorphine	5.655	3721	395.3	15.0	255.5	54226	2.597 ng/ml
Bupropion	4.796	270654	3072.6	63.2	7241.4	385889	25.175 ng/ml
Carisoprodol	5.726	137662	4068.4	70.6	1714.6	278837	24.991 ng/ml
Citalopram	5.240	227564	2649.0	42.0	27422.0	425923	23.949 ng/ml
Clonazepam	5.620	147675	3814.9	30.6	159.5	95631	26.103 ng/ml
Cocaine	4.281	248262	2712.3	46.1	14906.8	779526	24.076 ng/ml
Codeine	2.609	29883	735.5	107.3	10722.4	70567	23.052 ng/ml
Cyclobenzaprine	5.632	224277	298080.8	9.3	1337.6	336877	23.525 ng/ml
Dextromethorphan	5.289	170327	14463.9	78.5	148442.0	338343	24.669 ng/ml
Dextrorphan	4.141	95544	162563.3	212.1	29084.5	445279	24.943 ng/ml
Diazepam	5.942	123557	4318.7	88.4	8821.8	238371	24.590 ng/ml
Dihydrocodeine	2.587	83801	4935.0	59.3	522.0	184978	25.347 ng/ml
Diphenhydramine	5.311	751851	2198.3	28.8	149558.1	1569851	24.343 ng/ml
Doxylamine	4.543	704088	48244.0	101.1	29168.2	1205442	24.233 ng/ml
EDDP	5.279	133698	225295.8	235.9	5259.1	635382	24.358 ng/ml
Fentanyl	5.095	22004	399.0	83.2	396.2	462615	2.238 ng/ml
Fluoxetine	5.714	242431	9430.7	7.6	34220.7	363591	25.037 ng/ml
Hydrocodone	3.046	125632	969.9	36.0	2477.4	288259	25.668 ng/ml
Hydromorphone	1.637	81066	8475.0	81.1	8529.8	116541	22.033 ng/ml
Ketamine	4.056	230530	11850.1	39.1	608.2	412743	25.037 ng/ml
Lamotrigine	4.299	19103	1689.4	92.6	2454.6	488740	22.276 ng/ml
Lorazepam	5.749	126312	4972.1	54.0	766.8	453392	26.415 ng/ml
MDA	3.221	386095	928.0	22.1	171.0	488740	25.123 ng/ml
MDMA	3.313	220313	834.1	88.3	464.6	92678	24.628 ng/ml
Meprobamate	4.920	165426	4217.3	29.7	1905.7	195363	26.111 ng/ml
Methadone	5.662	424186	317232.7	55.1	9704.7	872975	24.203 ng/ml





# AM #28 Multi-Drug Quant. Results

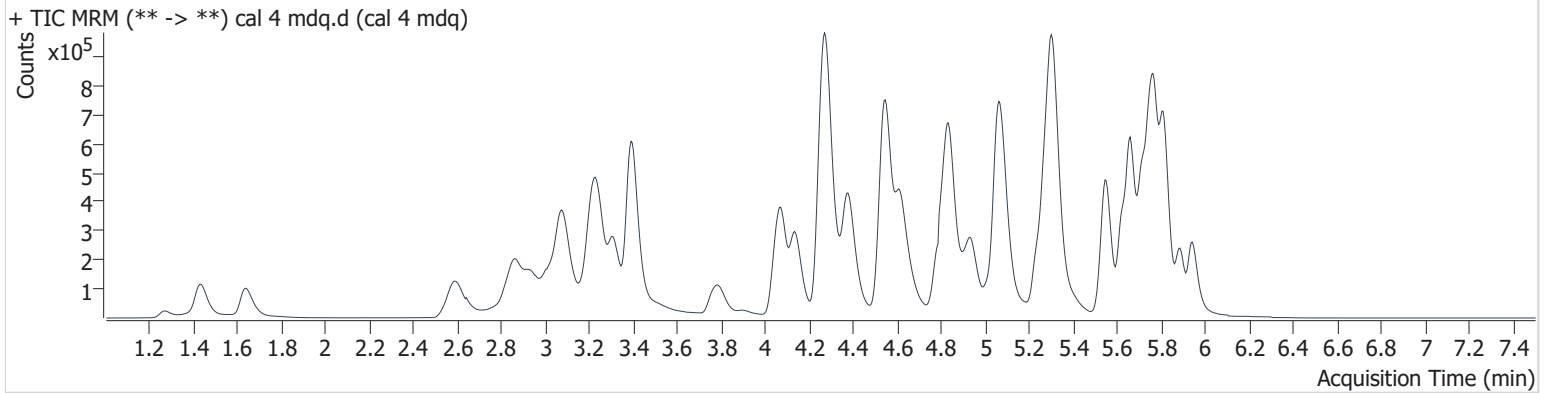
Name	RT	Resp.	S/N	Ratio	S/N	ISTD Resp.	Final Conc.
Methamphetamine	3.252	260776	575.0	41.5	98.8	361520	23.523 ng/ml
Metoprolol	4.339	53328	1942.5	92.7	3373.8	1205442	26.089 ng/ml
Mirtazapine	4.615	441281	2378.1	49.2	12570.7	872975	21.258 ng/ml
Mitragynine	5.224	69487	111220.2	32.3	455.3	872975	25.041 ng/ml
Morphine	1.271	12684	1987.3	23.8	1139.8	6639	23.391 ng/ml
Norbuprenorphine	5.017	542	977.1	115.5	240.8	10105	2.473 ng/ml
Nordiazepam	5.886	120780	24202.7	61.2	35763.4	176487	23.944 ng/ml
Norfentanyl	4.101	4882	315.6	311.0	56.8	737606	2.303 ng/ml
Norhydrocodone	3.097	6025	204.6	19.2	108.4	88868	22.750 ng/ml
Noroxycodone	2.938	103917	289.2	37.5	1194.6	151924	25.180 ng/ml
O-desmethyl-tramadol	3.394	508165	16739.8	6.0	1338.0	1122356	23.803 ng/ml
Oxazepam	5.756	195982	5474.3	76.5	1557.6	453392	25.100 ng/ml
Oxycodone	2.860	242184	3201.9	28.9	5035.2	435848	24.667 ng/ml
Oxymorphone	1.429	122477	5542.9	44.0	10004.9	188375	24.904 ng/ml
Phentermine	3.800	56975	115.0	10.0	220.3	364656	23.196 ng/ml
Promethazine	5.554	358606	12028.6	35.6	3516.5	716631	23.910 ng/ml
Quetiapine	5.531	206030	8137.5	53.5	179823.2	106962	24.672 ng/ml
Sertraline	5.776	112524	5550.2	104.0	101487.0	201711	24.285 ng/ml
Temazepam	5.813	354386	9180.2	31.5	722.2	668976	24.353 ng/ml
Tramadol	4.262	689776	13100.9	3.3	279.7	1177844	24.638 ng/ml
Trazodone	5.059	301035	8254.6	76.1	2238.1	551129	24.773 ng/ml
Venlafaxine	5.061	399655	9654.6	40.8	2128.8	962699	23.692 ng/ml
Zolpidem	4.834	541687	5367.6	33.7	3137.8	953047	23.390 ng/ml

# AM #28 Multi-Drug Quant. Results

**Batch results** D:\MassHunter\Data\2020 Data\am 27-28 6-25-20\QuantResults\mdq.batch.bin  
**Calibration Last Update** 6/29/2020 3:23:50 PM

<b>Instrument</b>	69679	<b>Data File</b>	cal 4 mdq.d
<b>Type</b>	Cal	<b>Sample</b>	cal 4 mdq
<b>Acq. Method</b>	MDQP1 5-27-20.m	<b>Operator</b>	Anne Nord
<b>Sample Position</b>	P2-D5	<b>Comment</b>	
<b>Injection Volume</b>	2		
<b>Acq. Date-Time</b>	6/25/2020 6:10:28 PM		

## Sample Chromatogram



Name	RT	Resp.	S/N	Ratio	S/N	ISTD Resp.	Final Conc.
6-MAM	3.156	10555	6024.4	80.8	103.8	47769	5.232 ng/ml
7-aminoclonazepam	4.272	227945	8954.8	91.5	12416.1	183051	54.459 ng/ml
a-hydroxyalprazolam	5.697	55366	1194.7	53.2	1131.5	61457	54.557 ng/ml
alpha-PVP	4.382	597130	11786.2	49.7	7317.3	490223	50.265 ng/ml
Alprazolam	5.776	302134	409373.9	116.5	2001.2	236008	47.813 ng/ml
Amphetamine	3.079	738309	9849.8	51.5	4142.5	256314	51.273 ng/ml
Benzoylcegonine	3.899	18705	894.9	7.3	222.8	9794	50.307 ng/ml
Buprenorphine	5.665	5048	164.5	17.5	1137.2	38841	4.914 ng/ml
Bupropion	4.796	456256	10572.6	62.6	6593.1	313687	52.598 ng/ml
Carisoprodol	5.726	270150	19413.3	70.9	2804.2	271656	51.164 ng/ml
Citalopram	5.240	324737	5608.5	41.9	254616.7	292048	49.655 ng/ml
Clonazepam	5.615	296365	9395.2	31.1	1483484.2	93442	55.748 ng/ml
Cocaine	4.281	492375	9289.9	44.7	13069.4	740148	50.223 ng/ml
Codeine	2.609	59680	2155.0	121.7	10519.9	64133	50.768 ng/ml
Cyclobenzaprine	5.632	303066	333442.2	9.0	856.5	215040	50.142 ng/ml
Dextromethorphan	5.284	222691	35343.5	79.9	36461.1	217405	51.087 ng/ml
Dextrorphan	4.136	166541	11345.0	214.6	51756.1	380206	51.045 ng/ml
Diazepam	5.942	252282	4942.0	87.2	3373.7	235205	51.241 ng/ml
Dihydrocodeine	2.587	170205	7863.7	60.5	5082.6	179129	53.348 ng/ml
Diphenhydramine	5.311	1075513	13336.2	28.6	2081.2	1095218	49.830 ng/ml
Doxylamine	4.548	1334527	2099.3	100.6	20992.8	1123344	49.298 ng/ml
EDDP	5.279	236674	673.0	234.6	3933.0	543501	50.621 ng/ml
Fentanyl	5.095	30792	447.0	79.0	1277.2	302405	4.693 ng/ml
Fluoxetine	5.714	310343	7732.3	7.5	640.9	227230	52.921 ng/ml
Hydrocodone	3.046	246290	2708.3	37.7	1151.4	278069	53.739 ng/ml
Hydromorphone	1.637	189183	13124.6	72.8	53.9	116005	50.739 ng/ml
Ketamine	4.056	451484	9438.7	38.9	1630.3	393291	51.875 ng/ml
Lamotrigine	4.299	38659	3382.4	86.1	3876.8	401908	55.704 ng/ml
Lorazepam	5.744	246224	2538.0	52.7	1150.3	441143	54.292 ng/ml
MDA	3.221	654561	4548.0	24.6	1627.2	401908	52.698 ng/ml
MDMA	3.313	402501	51681.4	87.2	7720.0	80151	52.979 ng/ml
Meprobamate	4.920	280204	3007.9	30.1	375.5	190584	53.905 ng/ml
Methadone	5.662	588067	770889.8	54.3	12900.4	592489	49.425 ng/ml



# AM #28 Multi-Drug Quant. Results

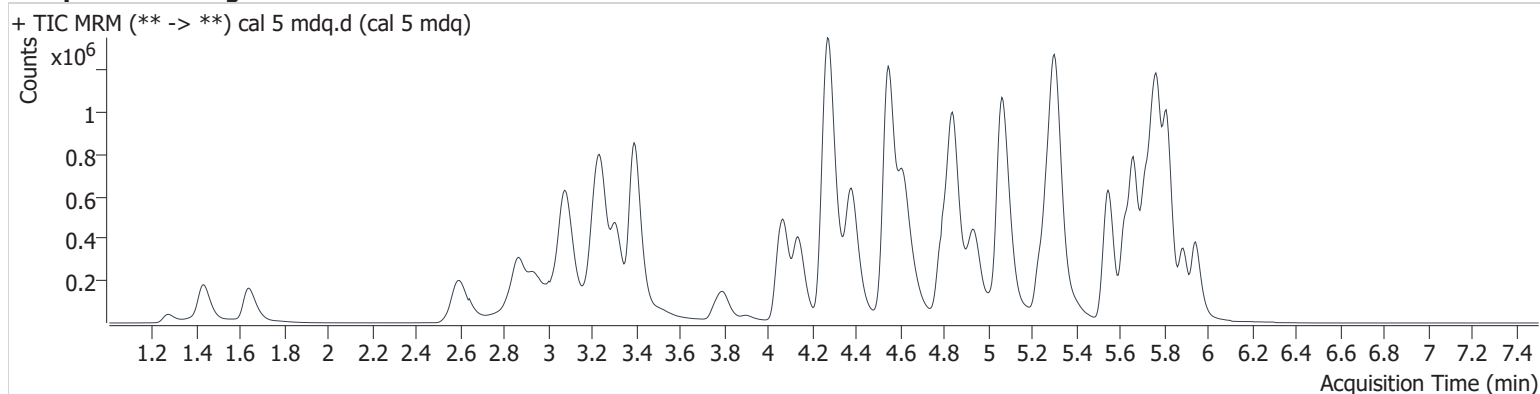
Name	RT	Resp.	S/N	Ratio	S/N	ISTD Resp.	Final Conc.
Methamphetamine	3.252	335992	∞	41.0	∞	293742	48.005 ng/ml
Metoprolol	4.344	102033	9653.0	93.2	2121.7	1123344	54.854 ng/ml
Mirtazapine	4.615	672723	18015.2	49.5	5466.3	592489	48.009 ng/ml
Mitragynine	5.224	98638	2497.9	33.0	2370.5	592489	51.839 ng/ml
Morphine	1.271	25489	853.7	23.5	1020.2	6159	51.367 ng/ml
Norbuprenorphine	5.017	760	860.3	100.9	1041.1	7229	5.177 ng/ml
Nordiazepam	5.886	239717	27932.6	60.4	26857.7	169804	49.367 ng/ml
Norfentanyl	4.101	10549	2645.5	287.8	1016.4	721262	5.016 ng/ml
Norhydrocodone	3.092	12589	365.2	15.9	4637.0	83693	50.549 ng/ml
Noroxycodone	2.938	206548	4387.3	38.9	1439.5	146527	53.073 ng/ml
O-desmethyl-tramadol	3.394	1022676	8702.4	6.0	2367.5	1097931	48.399 ng/ml
Oxazepam	5.751	396394	5593.6	72.5	2627.5	441143	53.192 ng/ml
Oxycodone	2.860	497372	9377.1	27.2	6297.0	434074	51.885 ng/ml
Oxymorphone	1.429	254158	4103.6	44.2	28941.4	189546	52.289 ng/ml
Phentermine	3.800	108854	235.3	9.0	305.9	310521	51.631 ng/ml
Promethazine	5.549	494811	2315.5	35.7	5172.1	463879	50.505 ng/ml
Quetiapine	5.531	331596	362990.2	54.5	345028.9	84759	51.110 ng/ml
Sertraline	5.776	143101	10191.2	106.9	203441.3	121963	51.867 ng/ml
Temazepam	5.813	706555	4021.4	31.4	971.4	660246	49.157 ng/ml
Tramadol	4.262	1250246	38395.8	3.3	725.4	1141612	50.857 ng/ml
Trazodone	5.064	473701	3370.8	74.1	6424.0	395424	55.282 ng/ml
Venlafaxine	5.061	756650	2910.7	40.0	6003.6	878236	48.435 ng/ml
Zolpidem	4.839	1095043	6914.3	33.1	4945.8	795788	58.730 ng/ml

# AM #28 Multi-Drug Quant. Results

**Batch results** D:\MassHunter\Data\2020 Data\am 27-28 6-25-20\QuantResults\mdq.batch.bin  
**Calibration Last Update** 6/29/2020 3:23:50 PM

<b>Instrument</b>	69679	<b>Data File</b>	cal 5 mdq.d
<b>Type</b>	Cal	<b>Sample</b>	cal 5 mdq
<b>Acq. Method</b>	MDQP1 5-27-20.m	<b>Operator</b>	Anne Nord
<b>Sample Position</b>	P2-E5	<b>Comment</b>	
<b>Injection Volume</b>	2		
<b>Acq. Date-Time</b>	6/25/2020 6:21:16 PM		

## Sample Chromatogram



Name	RT	Resp.	S/N	Ratio	S/N	ISTD Resp.	Final Conc.
6-MAM	3.151	19009	29874.2	74.4	2158.2	45793	9.854 ng/ml
7-aminoclonazepam	4.272	389500	3440.8	90.7	963.6	163550	104.837 ng/ml
a-hydroxyalprazolam	5.697	93711	786.0	57.0	2801.0	55892	101.881 ng/ml
alpha-PVP	4.382	1079679	1137.6	49.8	4907.4	451072	98.535 ng/ml
Alprazolam	5.771	544830	3011.5	115.6	6977.3	214219	93.731 ng/ml
Amphetamine	3.079	1438205	6105.5	51.1	10390.1	253077	101.840 ng/ml
Benzoylcegonine	3.899	34472	515.7	6.9	85.0	9800	92.473 ng/ml
Buprenorphine	5.665	7882	290.6	16.5	1248.9	29292	10.169 ng/ml
Bupropion	4.796	856623	71631.8	62.3	2428.0	302609	102.711 ng/ml
Carisoprodol	5.726	482454	4923.7	70.3	2846.1	241103	103.773 ng/ml
Citalopram	5.235	536641	3861.8	41.7	206679.2	244369	97.899 ng/ml
Clonazepam	5.615	534648	2041.4	31.3	165442.0	88032	108.605 ng/ml
Cocaine	4.281	882825	459081.6	45.0	22551.0	667284	99.823 ng/ml
Codeine	2.609	117004	2796.9	114.3	4219.4	63424	100.737 ng/ml
Cyclobenzaprine	5.632	450337	72784.2	9.3	1890.2	163279	98.420 ng/ml
Dextromethorphan	5.284	340514	2814.1	80.7	6419.8	174700	97.992 ng/ml
Dextrorphan	4.136	300040	349096.2	216.2	115052.5	352102	99.416 ng/ml
Diazepam	5.942	447989	3928.5	86.1	62191.2	210437	102.029 ng/ml
Dihydrocodeine	2.587	315662	23647.2	61.4	3759.3	173958	102.037 ng/ml
Diphenhydramine	5.311	1735941	257998.8	28.8	13789.7	913558	96.348 ng/ml
Doxylamine	4.548	2471108	119648.0	100.4	31656.8	1045662	98.075 ng/ml
EDDP	5.279	418198	31381.9	233.4	12127.2	486961	100.026 ng/ml
Fentanyl	5.095	45498	419.9	79.1	1974.8	232985	8.920 ng/ml
Fluoxetine	5.714	453101	13469.7	7.8	6944.7	173289	102.743 ng/ml
Hydrocodone	3.046	448091	1387.2	37.7	2760.4	251861	109.484 ng/ml
Hydromorphone	1.637	327850	13236.5	77.2	3400.9	110520	91.734 ng/ml
Ketamine	4.056	825132	14610.7	38.7	4614.0	370571	100.989 ng/ml
Lamotrigine	4.299	65905	2517.5	90.2	2087.8	377821	101.510 ng/ml
Lorazepam	5.744	410946	6197.8	52.4	2249.0	377210	107.272 ng/ml
MDA	3.221	1170171	11256.5	24.6	3323.4	377821	100.983 ng/ml
MDMA	3.313	723693	1862.3	86.6	11444.3	74957	102.645 ng/ml
Meprobamate	4.920	467386	8311.2	30.6	5766.6	176431	106.459 ng/ml
Methadone	5.662	916536	26546.3	55.4	62598.9	476043	95.863 ng/ml

# AM #28 Multi-Drug Quant. Results

Name	RT	Resp.	S/N	Ratio	S/N	ISTD Resp.	Final Conc.
Methamphetamine	3.247	723190	∞	41.4	1031.0	353014	100.435 ng/ml
Metoprolol	4.344	178332	117771.4	95.8	44971.4	1045662	104.071 ng/ml
Mirtazapine	4.615	1149887	15730.4	50.1	9969.9	476043	102.369 ng/ml
Mitragynine	5.224	150085	2812.8	31.9	81094.7	476043	97.732 ng/ml
Morphine	1.271	48772	19350.5	24.7	3673.3	5889	103.400 ng/ml
Norbuprenorphine	5.002	1202	2141.8	108.8	2874.5	6028	10.133 ng/ml
Nordiazepam	5.886	433973	603944.7	59.5	20331.2	149636	101.393 ng/ml
Norfentanyl	4.101	19598	32697.1	299.2	774.6	681655	9.801 ng/ml
Norhydrocodone	3.097	20796	1181.6	19.3	185.4	69950	99.974 ng/ml
Noroxycodone	2.938	376207	2910.4	38.2	2180.6	136075	105.162 ng/ml
O-desmethyl-tramadol	3.394	1916352	40735.4	6.0	703.0	1035122	95.665 ng/ml
Oxazepam	5.751	655379	12175.8	73.8	1478.6	377210	103.731 ng/ml
Oxycodone	2.860	923172	15913.7	28.4	7146.1	409648	102.974 ng/ml
Oxymorphone	1.429	474813	9768.8	44.4	19472.9	179662	103.909 ng/ml
Phentermine	3.800	209968	641.6	8.6	503.6	313310	98.403 ng/ml
Promethazine	5.549	710743	277989.2	35.4	7221.9	346353	96.783 ng/ml
Quetiapine	5.525	598901	15355.5	53.6	501553.0	75374	104.805 ng/ml
Sertraline	5.776	196823	3801.7	107.6	21325.3	87668	99.900 ng/ml
Temazepam	5.813	1273259	7439.9	31.6	3729.1	591749	98.800 ng/ml
Tramadol	4.262	2171207	93456.3	3.3	711.2	1049562	100.952 ng/ml
Trazodone	5.064	816442	12756.2	73.2	3864.3	352893	107.506 ng/ml
Venlafaxine	5.061	1382895	15875.2	40.0	3631.4	810976	95.196 ng/ml
Zolpidem	4.839	2075553	18151.9	30.6	5397.6	915630	97.706 ng/ml

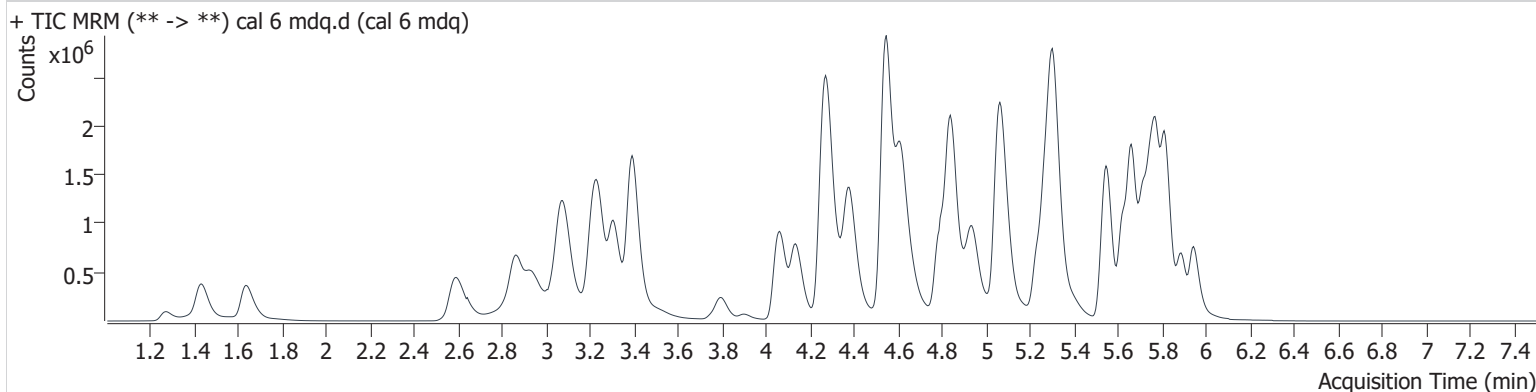


# AM #28 Multi-Drug Quant. Results

**Batch results** D:\MassHunter\Data\2020 Data\am 27-28 6-25-20\QuantResults\mdq.batch.bin  
**Calibration Last Update** 6/29/2020 3:23:50 PM

**Instrument** 69679 **Data File** cal 6 mdq.d  
**Type** Cal **Sample** cal 6 mdq  
**Acq. Method** MDQP1 5-27-20.m **Operator** Anne Nord  
**Sample Position** P2-F5 **Comment**  
**Injection Volume** 2  
**Acq. Date-Time** 6/25/2020 6:32:06 PM  
**Sample Info.**

## Sample Chromatogram



Name	RT	Resp.	S/N	Ratio	S/N	ISTD Resp.	Final Conc.
6-MAM	3.151	50911	2370.0	79.2	10872.5	48441	24.993 ng/ml
7-aminoclonazepam	4.272	795009	16639.3	90.5	7096.0	135636	259.116 ng/ml
a-hydroxyalprazolam	5.697	187832	2253.9	58.8	1403.8	45713	250.261 ng/ml
alpha-PVP	4.377	2732002	40852.1	50.4	23771.5	452599	248.113 ng/ml
Alprazolam	5.776	1215475	8595.3	112.3	4089.5	184048	241.350 ng/ml
Amphetamine	3.079	3238196	8060.5	47.4	12466.1	224951	259.044 ng/ml
Benzoylcegonine	3.899	97251	3046.4	7.4	387.3	10329	247.170 ng/ml
Buprenorphine	5.670	20434	1479.9	17.0	380.0	30762	25.094 ng/ml
Bupropion	4.791	2056313	17827.9	62.7	8992.8	297310	251.475 ng/ml
Carisoprodol	5.726	943541	5466.3	69.8	8750.5	195865	250.967 ng/ml
Citalopram	5.235	1382320	6262.0	41.2	273911.0	246769	249.453 ng/ml
Clonazepam	5.615	1117095	29342.8	32.0	460241.9	76845	262.779 ng/ml
Cocaine	4.281	2089458	6178.2	45.2	75004.7	635401	248.025 ng/ml
Codeine	2.604	295593	2915.5	110.3	5435.6	61662	261.921 ng/ml
Cyclobenzaprine	5.627	1337595	254135.4	9.1	2201.5	186264	256.745 ng/ml
Dextromethorphan	5.279	942094	13284.4	78.7	7701.5	188615	252.459 ng/ml
Dextrorphan	4.136	720154	461155.5	216.8	215043.6	338024	248.737 ng/ml
Diazepam	5.942	1057130	6537.9	87.2	4320.9	201780	251.576 ng/ml
Dihydrocodeine	2.582	793758	13829.1	62.3	18276.2	176748	252.781 ng/ml
Diphenhydramine	5.310	4718947	189588.6	29.2	7615.1	975526	245.152 ng/ml
Doxylamine	4.543	6526301	23311.1	99.2	55116.3	1078778	251.085 ng/ml
EDDP	5.273	1066009	2385.2	238.8	191690.2	504297	246.496 ng/ml
Fentanyl	5.095	143608	4331.6	76.8	4166.8	273121	23.871 ng/ml
Fluoxetine	5.709	1272509	10390.2	7.5	1635.3	195460	258.145 ng/ml
Hydrocodone	3.041	1103565	3654.5	39.1	854.0	260497	262.807 ng/ml
Hydromorphone	1.637	893580	23499.3	73.9	3630.8	105183	261.444 ng/ml
Ketamine	4.056	2093447	23823.6	38.8	3634.0	380229	250.292 ng/ml
Lamotrigine	4.299	138502	3043.5	88.7	7503.0	353449	228.795 ng/ml
Lorazepam	5.744	678204	1597.7	53.7	1929.2	280400	239.826 ng/ml
MDA	3.216	2809625	38981.1	23.6	3425.9	353449	260.515 ng/ml
MDMA	3.308	1887574	14498.1	85.8	44103.0	77966	258.685 ng/ml
Meprobamate	4.914	953999	1552.0	29.7	6723.1	159292	255.351 ng/ml
Methadone	5.662	2628038	67495.7	54.2	27327.6	532300	245.805 ng/ml



# AM #28 Multi-Drug Quant. Results

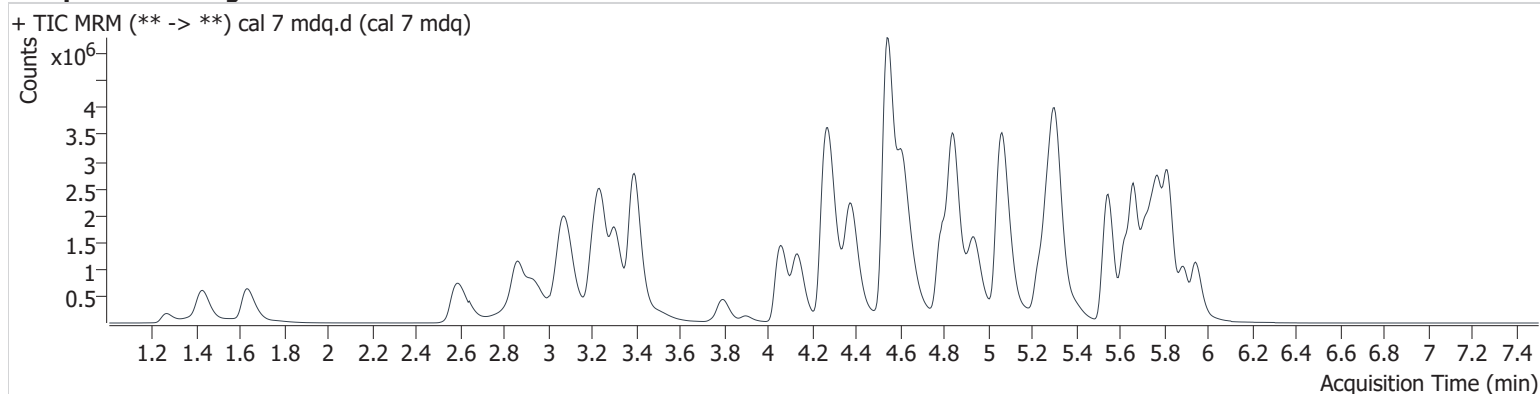
Name	RT	Resp.	S/N	Ratio	S/N	ISTD Resp.	Final Conc.
Methamphetamine	3.247	1006924	∞	40.9	813.5	215419	252.583 ng/ml
Metoprolol	4.339	425131	12102.3	95.7	11074.7	1078778	242.087 ng/ml
Mirtazapine	4.615	3100629	41698.2	49.4	15729.0	532300	247.154 ng/ml
Mitragynine	5.224	433631	3719.3	32.6	1559.7	532300	251.751 ng/ml
Morphine	1.271	123475	12354.5	22.1	2526.6	5958	259.656 ng/ml
Norbuprenorphine	5.002	3313	393.9	104.7	3864.2	6564	26.199 ng/ml
Nordiazepam	5.891	968728	38616.8	60.4	1623.9	139500	242.745 ng/ml
Norfentanyl	4.096	48536	4304.8	294.5	2081.4	664913	24.790 ng/ml
Norhydrocodone	3.092	48512	1140.2	18.5	30.2	59820	272.825 ng/ml
Noroxycodone	2.933	901930	2737.4	40.0	5394.0	132384	260.780 ng/ml
O-desmethyl-tramadol	3.394	4895887	100172.8	6.1	1633.7	1052462	239.564 ng/ml
Oxazepam	5.751	1227918	8267.8	74.0	11634.3	280400	262.881 ng/ml
Oxycodone	2.855	2383917	17828.0	29.1	6056.5	428891	255.388 ng/ml
Oxymorphone	1.429	1179469	19253.4	44.2	12796.9	178970	260.419 ng/ml
Phentermine	3.795	461956	593.0	7.9	1248.6	260396	259.948 ng/ml
Promethazine	5.549	2323175	912739.0	35.0	16754.1	439447	248.688 ng/ml
Quetiapine	5.526	1443614	18417.3	56.5	1203407.2	76593	249.936 ng/ml
Sertraline	5.776	547538	7672.2	104.8	819500.0	97276	251.539 ng/ml
Temazepam	5.813	2944520	165325.0	31.3	6009.1	540893	249.907 ng/ml
Tramadol	4.257	5165612	29696.9	3.3	1959.3	1064964	244.096 ng/ml
Trazodone	5.064	2014296	12967.1	75.3	9885.0	379119	247.920 ng/ml
Venlafaxine	5.055	3522521	20728.0	39.6	10874.4	803319	243.723 ng/ml
Zolpidem	4.839	4767626	13505.8	34.4	7798.7	900958	230.065 ng/ml

# AM #28 Multi-Drug Quant. Results

**Batch results** D:\MassHunter\Data\2020 Data\am 27-28 6-25-20\QuantResults\mdq.batch.bin  
**Calibration Last Update** 6/29/2020 3:23:50 PM

<b>Instrument</b>	69679	<b>Data File</b>	cal 7 mdq.d
<b>Type</b>	Cal	<b>Sample</b>	cal 7 mdq
<b>Acq. Method</b>	MDQP1 5-27-20.m	<b>Operator</b>	Anne Nord
<b>Sample Position</b>	P2-G5	<b>Comment</b>	
<b>Injection Volume</b>	2		
<b>Acq. Date-Time</b>	6/25/2020 6:42:54 PM		

## Sample Chromatogram



Name	RT	Resp.	S/N	Ratio	S/N	ISTD Resp.	Final Conc.
6-MAM	3.151	93884	4049.2	78.2	6262.7	45950	48.613 ng/ml
7-aminoclonazepam	4.272	1128309	12895.4	79.9	1954.1	103657	481.846 ng/ml
a-hydroxyalprazolam	5.692	287759	3224.1	57.4	2165.1	37411	468.829 ng/ml
alpha-PVP	4.377	4861656	33880.8	50.5	33224.1	404347	493.966 ng/ml
Alprazolam	5.776	1983008	8159.4	112.1	5969.9	145509	496.688 ng/ml
Amphetamine	3.079	5632767	11400.0	47.6	10880.1	213355	475.676 ng/ml
Benzoylcegonine	3.894	203567	1730.7	7.6	1230.3	10740	497.374 ng/ml
Buprenorphine	5.670	29769	5065.6	16.9	1428.4	22351	50.311 ng/ml
Bupropion	4.791	3870629	638619.3	62.3	7509.3	290345	485.047 ng/ml
Carisoprodol	5.726	1420489	63993.7	69.2	1402.4	149164	496.912 ng/ml
Citalopram	5.235	2145257	12557.3	41.3	757552.1	193950	492.395 ng/ml
Clonazepam	5.615	1741053	249990.6	31.4	624244.1	63841	494.757 ng/ml
Cocaine	4.281	3531950	328031.8	44.8	8939.2	538527	494.611 ng/ml
Codeine	2.604	492633	2283.1	113.9	2696.9	54017	498.378 ng/ml
Cyclobenzaprine	5.627	1862632	1443964.1	9.4	5478.6	133874	497.726 ng/ml
Dextromethorphan	5.279	1301433	25480.7	79.4	33270.6	132167	498.545 ng/ml
Dextrorphan	4.131	1280651	106811.0	219.3	273518.4	301013	496.836 ng/ml
Diazepam	5.942	1770350	32730.1	86.4	4717.7	170032	500.304 ng/ml
Dihydrocodeine	2.577	1442139	34207.1	63.8	32125.1	168362	482.296 ng/ml
Diphenhydramine	5.311	7341191	6659.6	29.2	6559.3	755139	492.604 ng/ml
Doxylamine	4.544	12460993	67432.8	98.0	302068.8	1010578	511.774 ng/ml
EDDP	5.273	1962513	150869.3	232.9	293692.5	448160	510.852 ng/ml
Fentanyl	5.095	209861	1497.7	77.5	130058.4	194330	48.937 ng/ml
Fluoxetine	5.709	1740607	103504.7	7.5	235861.6	135494	510.901 ng/ml
Hydrocodone	3.035	1836295	1981.1	39.3	2067.3	239141	477.596 ng/ml
Hydromorphone	1.632	1669692	2131.2	75.7	54608.0	101220	507.004 ng/ml
Ketamine	4.056	3799890	39858.7	37.9	6808.1	349417	494.759 ng/ml
Lamotrigine	4.299	182148	6473.5	88.0	8896.0	282040	377.469 ng/ml
Lorazepam	5.744	803200	6813.3	53.1	2812.0	191012	417.951 ng/ml
MDA	3.211	4321419	10688.9	24.1	1297.3	282040	502.931 ng/ml
MDMA	3.308	3034027	76593.8	85.1	1233.8	64542	503.091 ng/ml
Meprobamate	4.914	1429074	255419.4	30.0	546.9	132569	468.927 ng/ml
Methadone	5.662	4102260	194146.6	53.5	84845.5	406780	502.074 ng/ml





# AM #28 Multi-Drug Quant. Results

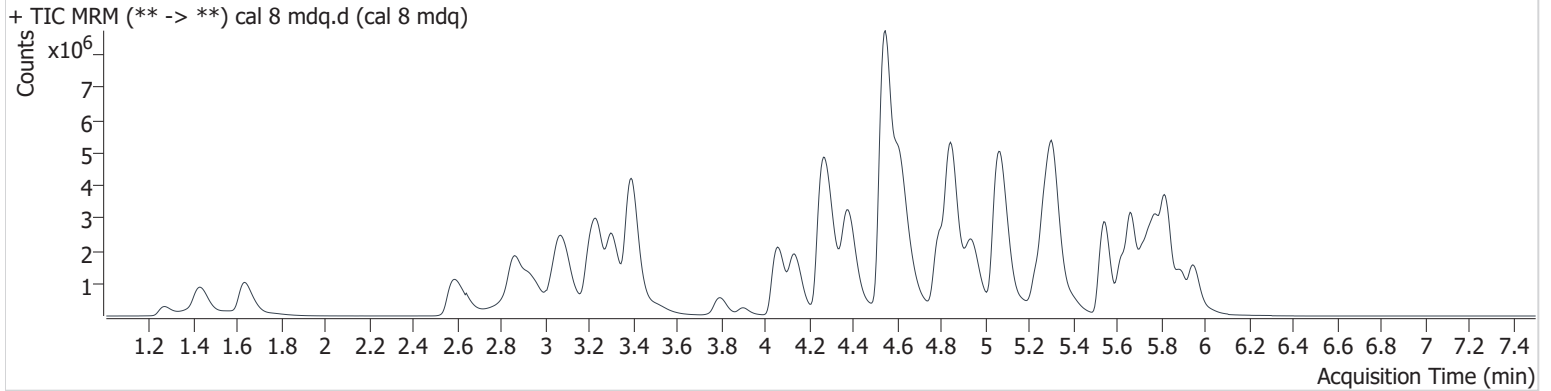
Name	RT	Resp.	S/N	Ratio	S/N	ISTD Resp.	Final Conc.
Methamphetamine	3.242	2708873	6061.6	40.9	8930.5	284258	533.937 ng/ml
Metoprolol	4.339	690574	18145.5	95.6	20881.8	1010578	420.680 ng/ml
Mirtazapine	4.610	5354567	50159.1	49.4	10982.1	406780	558.782 ng/ml
Mitragynine	5.224	643406	3299.4	33.6	339211.2	406780	488.341 ng/ml
Morphine	1.261	221456	11254.3	23.7	1285.2	6020	461.309 ng/ml
Norbuprenorphine	5.002	5430	5114.1	101.3	4869.3	5596	50.684 ng/ml
Nordiazepam	5.891	1578461	4691373.0	58.9	8194.0	110275	500.330 ng/ml
Norfentanyl	4.096	89285	2758.5	295.5	3127.5	593424	51.032 ng/ml
Norhydrocodone	3.087	84219	1656.4	23.3 High	529.1	46852	604.812 ng/ml
Noroxycodone	2.933	1485791	1799.6	39.3	5443.5	109814	518.984 ng/ml
O-desmethyl-tramadol	3.392	9170305	677826.7	6.0	36256.0	956028	493.408 ng/ml
Oxazepam	5.751	1635575	15729.1	72.5	32805.4	191012	514.916 ng/ml
Oxycodone	2.855	4426420	21247.0	28.8	5162.8	405618	502.334 ng/ml
Oxymorphone	1.424	2132207	41097.6	44.3	10318.1	167724	503.155 ng/ml
Phentermine	3.795	982171	1322.9	7.4	5199.1	279025	515.453 ng/ml
Promethazine	5.549	3375155	174430.4	35.6	49792.3	320668	494.722 ng/ml
Quetiapine	5.526	2601210	4729874.6	55.4	1881654.5	72279	478.117 ng/ml
Sertraline	5.776	684372	21271.4	106.4	401439.4	61735	496.093 ng/ml
Temazepam	5.818	4986182	15063.8	30.5	3940.4	451753	506.650 ng/ml
Tramadol	4.252	8748283	255556.2	3.3	3975.6	948638	469.038 ng/ml
Trazodone	5.064	3374350	172737.3	75.8	17854.6	335091	470.596 ng/ml
Venlafaxine	5.057	6419205	690983.4	38.3	8380.9	723696	492.312 ng/ml
Zolpidem	4.842	9510680	48783.2	28.3	12711.2	816235	508.361 ng/ml

# AM #28 Multi-Drug Quant. Results

Batch results D:\MassHunter\Data\2020 Data\am 27-28 6-25-20\QuantResults\mdq.batch.bin  
Calibration Last Update 6/29/2020 3:23:50 PM

Instrument 69679 Data File cal 8 mdq.d  
Type Cal Sample cal 8 mdq  
Acq. Method MDQP1 5-27-20.m Operator Anne Nord  
Sample Position P2-H5 Comment  
Injection Volume 2  
Acq. Date-Time 6/25/2020 7:04:24 PM  
Sample Info.

## Sample Chromatogram



Name	RT	Resp.	S/N	Ratio	S/N	ISTD Resp.	Final Conc.
6-MAM	3.151	178089	13110.3	77.3	9013.5	42342	100.102 ng/ml
7-aminoclonazepam	4.277	1143335	45358.1	88.9	8647.9	62278	813.189 ng/ml
a-hydroxyalprazolam	5.697	424194	2370.2	60.4	2060.1	27769	931.473 ng/ml
alpha-PVP	4.377	7610217	36827.3	50.6	6278.3	309581	1009.668 ng/ml
Alprazolam	5.776	3056459	11711.3	111.6	7360.7	109007	1020.568 ng/ml
Amphetamine	3.079	6766526	25986.8	45.6	30907.9	124373	980.988 ng/ml
Benzoylcegonine	3.899	447773	53173.7	7.4	832.5	9820	1196.209 ng/ml
Buprenorphine	5.670	33236	2492.2	16.9	3996.2	13239	94.824 ng/ml
Bupropion	4.791	5443544	1570953.8	61.1	324678.4	209933	943.794 ng/ml
Carisoprodol	5.726	2109070	53382.1	68.1	13955.6	110417	997.506 ng/ml
Citalopram	5.235	2740255	11720.7	40.8	566539.1	120589	1011.413 ng/ml
Clonazepam	5.615	2746508	170506.1	31.2	1031611.0	51030	978.375 ng/ml
Cocaine	4.281	5367487	28766.0	45.3	65023.1	401537	1008.031 ng/ml
Codeine	2.609	823977	10293.8	108.1	3202.6	44442	1013.265 ng/ml
Cyclobenzaprine	5.627	1542071	212929.5	9.1	4748.8	55288	998.075 ng/ml
Dextromethorphan	5.279	1447116	328199.5	78.7	1750.6	73149	1002.483 ng/ml
Dextrorphan	4.136	2049290	268602.4	218.7	57918.6	238333	1004.244 ng/ml
Diazepam	5.947	2811589	4779.5	86.1	9517.1	135760	995.473 ng/ml
Dihydrocodeine	2.577	2436475	44790.8	63.5	17076.6	150773	910.044 ng/ml
Diphenhydramine	5.314	9798651	322140.9	29.5	15332.7	488526	1016.252 ng/ml
Doxylamine	4.543	22070743	3041.0	97.3	1223241.6	887262	1032.440 ng/ml
EDDP	5.279	3475525	1648.0	240.1	32152.0	399573	1014.903 ng/ml
Fentanyl	5.100	216057	1245.7	76.8	308097.0	94347	103.676 ng/ml
Fluoxetine	5.714	1059993	11315.8	7.8	79805.4	43257	975.958 ng/ml
Hydrocodone	3.035	3243188	3222.2	38.0	1618.1	202679	996.910 ng/ml
Hydromorphone	1.632	2954512	69818.9	74.9	18258.4	91564	991.099 ng/ml
Ketamine	4.057	6191249	56293.3	38.0	11439.8	291650	966.166 ng/ml
Lamotrigine	4.304	215120	4774.9	91.3	798.2	217062	579.571 ng/ml
Lorazepam	5.744	786766	2997.3	52.1	2284.6	103443	757.081 ng/ml
MDA	3.211	6497468	1668.5	24.1	758.1	217062	983.359 ng/ml
MDMA	3.302	4880094	314285.1	85.0	5240.0	53145	983.554 ng/ml
Meprobamate	4.909	1847259	233784.6	29.6	29034.7	97651	831.677 ng/ml
Methadone	5.662	5416506	250714.8	52.8	34604.4	267776	1007.039 ng/ml

# AM #28 Multi-Drug Quant. Results

Name	RT	Resp.	S/N	Ratio	S/N	ISTD Resp.	Final Conc.
Methamphetamine	3.242	2255931	∞	40.3	∞	133026	964.422 ng/ml
Metoprolol	4.339	981005	2416400.8	96.2	39884.4	887262	681.417 ng/ml
Mirtazapine	4.615	8366835	54823.3	49.0	58330.4	267776	1326.664 ng/ml
Mitragynine	5.224	587937	7017.8	33.6	424085.8	267776	677.696 ng/ml
Morphine	1.266	422058	21549.8	24.0	10016.0	5063	1046.154 ng/ml
Norbuprenorphine	5.002	6135	11066.1	102.3	9630.6	3373	95.307 ng/ml
Nordiazepam	5.891	2268326	7184409.2	59.5	4024.4	74700	1061.386 ng/ml
Norfentanyl	4.096	140146	19723.9	295.8	2781.5	450609	105.424 ng/ml
Norhydrocodone	3.087	156085	2689.8	27.0 <b>High</b>	1375.4	38152	1376.596 ng/ml
Noroxycodone	2.933	2189789	43707.2	39.8	4570.3	87322	962.858 ng/ml
O-desmethyl-tramadol	3.389	16011258	804266.0	5.9	83685.8	804430	1023.257 ng/ml
Oxazepam	5.751	1660653	52086.3	71.8	5352.7	103443	966.221 ng/ml
Oxycodone	2.858	7830639	16478.4	28.9	13889.9	365109	988.189 ng/ml
Oxymorphone	1.424	3537974	5475.4	43.8	6044.5	142859	981.030 ng/ml
Phentermine	3.795	1360566	970.3	7.4	2590.1	197948	1006.182 ng/ml
Promethazine	5.549	2814396	20404.4	35.9	54817.0	130916	1010.027 ng/ml
Quetiapine	5.532	4483741	7578527.4	56.6	1931704.6	62127	959.773 ng/ml
Sertraline	5.776	384204	79224.9	105.7	463702.5	17182	1001.384 ng/ml
Temazepam	5.818	7442087	43254.5	30.3	17232.8	325836	1048.384 ng/ml
Tramadol	4.252	13716900	519241.0	3.3	1824.7	664128	1057.299 ng/ml
Trazodone	5.074	5012472	7990.3	76.6	4900.0	266746	878.853 ng/ml
Venlafaxine	5.055	10900626	315212.3	37.7	1933.7	592294	1020.748 ng/ml
Zolpidem	4.844	16329380	41808.5	27.8	38455.9	694640	1027.125 ng/ml